



14 December 2023

LITHIUM EXPLORATION IN MENZIES UNCOVERS MULTIPLE OUTCROPPING PEGMATITES

HIGHLIGHTS

- **Field work undertaken during and after the recent heritage survey completed at Menzies has uncovered numerous outcropping pegmatites¹ over +3km**
- **Analysis of hyperspectral imagery has identified 162 potential lithium bearing pegmatite targets within the Menzies Northern Trend**
- **Rock chip assays received from first pass field mapping indicate a fertile LCT-type pegmatite with significant anomalies in key indicators including Cs, Rb, Ta and Li**
- **A comprehensive 400m x 100m soil sampling program has been completed covering the entire Northern Trend**
- **Multi-element assays for the soil survey program and December rock chip sampling submitted to laboratory for analysis**

Brightstar's Managing Director, Alex Rovira, commented: "In conjunction with the recent drilling programs at Menzies and Pre-Feasibility Study workstreams underway for the restart of gold mining operations at Menzies and Laverton, Brightstar has been advancing initial greenfields exploration efforts within the Northern Trend at Menzies for potential lithium-bearing pegmatites. The structural and geological setting is ideal to host lithium-bearing LCT Pegmatites, given the greenstone terrane and proximal granitic intrusion to the north is a similar geological setting to Delta Lithium's (ASX:DLI) Mt Ida Lithium Project located approximately 70km to the northwest.

Recent transactions from WA gold miners such as Ora Banda Mining's (ASX:OBM) transformational \$26 million Joint Venture with Wesfarmers² and Pantoro's (ASX:PNR) sale of Lithium and Base Metals rights for up to \$60 million to Mineral Resources Ltd³ have shown that it is commercially pragmatic to conduct greenfields exploration for lithium in the greenstone belts in parallel with Brightstar's gold drilling and study work.

Brightstar's recently commissioned hyperspectral survey has delineated 162 potential lithium-bearing outcropping targets, with many being ground-truthed via rock chip sampling, mapping and soil sampling programs to define potential drill targets. The recent Heritage Survey with the Watarra Darlot Native Title Group has, for the first time, cleared the Northern Trend of any areas of cultural heritage significance and now affords Brightstar the opportunity to explore compelling targets. The existence of overlapping data sets and the presence of numerous outcropping pegmatites over a strike length of 3-4km is significant and warrants further considered exploration in parallel with the gold infill and extensional drilling and various workstreams within our PFS underway."

1. Cautionary Note: The identification of pegmatites in the mapping completed to date does not imply the presence of lithium mineralisation. The presence of any lithium mineralisation will be determined by drilling and laboratory analyses.

“We eagerly await the results from the recent sampling program which will aid in generating targets for further follow-up sampling and potential drilling. The correlation between the hyperspectral targeting and the identification of pegmatites in the field is encouraging as a way to vector on-ground exploration efforts efficiently.”

Brightstar Resources Limited (ASX: BTR) (**Brightstar** or the **Company**) is pleased to advise the completion of its first phase of lithium-focused field exploration activities at the Menzies Northern Trend (*Figure 1*), where early-stage exploration efforts into potential lithium mineralisation have occurred in parallel with the drilling underway at the Aspacia and Link Zone Gold Deposits in Menzies.

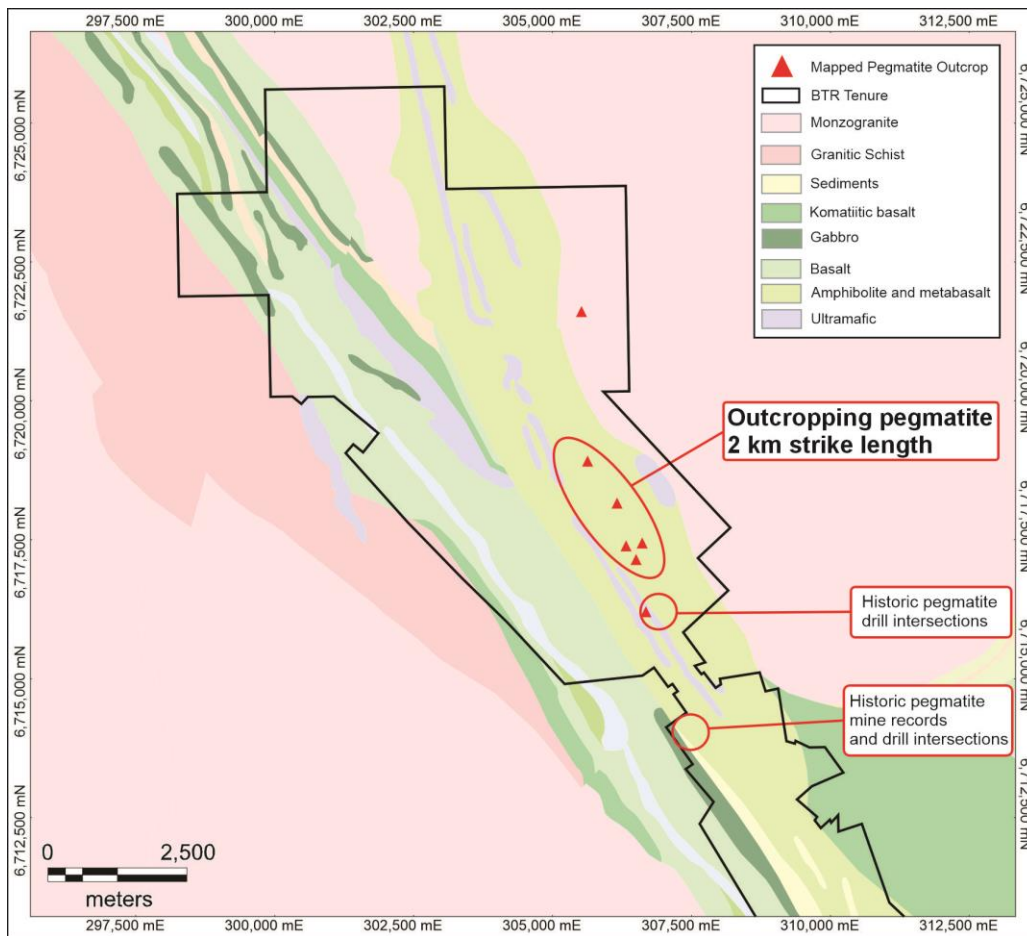


Figure 1 – Geology of Menzies Gold Project (Northern Trend area) with pegmatite outcrop locations

REMOTE SENSING PROGRAM

Brightstar commissioned Terra Resources to analyse a remote sensing dataset and perform a hard-rock lithium pegmatite targeting exercise over the tenement package as part of a holistic targeting campaign. Both ASTER and Sentinel-2 were processed over the project area, with lithium band combinations for the different mineral species used to derive the best Li-pegmatite target for follow up ground truthing. Confirmed lithium-bearing pegmatites in the Menzies-Mt Ida District were used as controls for the algorithms, which showed strong correlations to the Sentinel-2 lithium band combination and confirmed lithium pegmatite outcrops in the district.

In total, 162 features within Brightstar tenure were identified in the target generation exercise (*Figure 2*). Subsequent to the receipt of the hyperspectral survey data, these targets were ground-truthed with a comprehensive soil sampling campaign covering the entire Northern Trend completed in December, with additional field checking and rock chip sampling completed by Brightstar geologists.

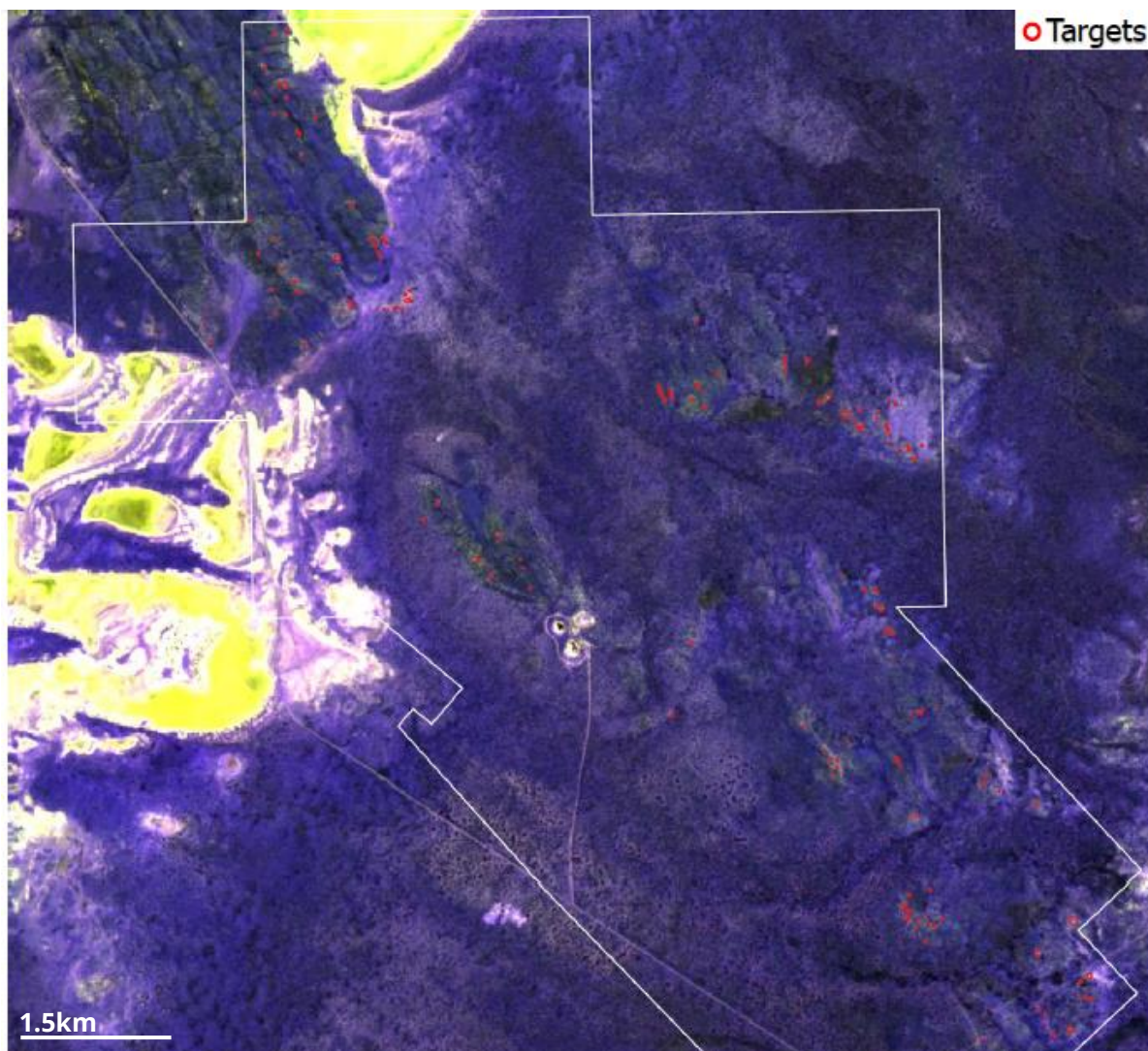


Figure 2 - Remote Sensing Lithium Anomalies (shown in red)

SOIL SAMPLING PROGRAM

A comprehensive soil sampling program has recently been completed across the entire 11km of NW-SE strike length of the 'Northern Trend' covering the Menzies Greenstone Belt and across the Menzies Shear Zone with 1,311 samples collected over November and early December 2023.

The soil sampling program was designed to provide background geochemical information for the entire Northern Trend, given it predominantly contains a shallow cover sequence over the bedrock lithology.

In addition, the broad geochemical targeting can also identify potential 'blind targets' in addition to the mapped pegmatite outcrop occurrences.

The soil sampling program was designed on a grid spacing of 400m x 100m, with closer spaced lines occurring on a 200m x 100m grid near the known areas of pegmatite outcrops or the areas identified through the hyperspectral remote sensing targeting (*Figures 3 & 4*).

Samples will be analysed for gold, lithium and pathfinder elements which will be used to vector further exploration efforts.

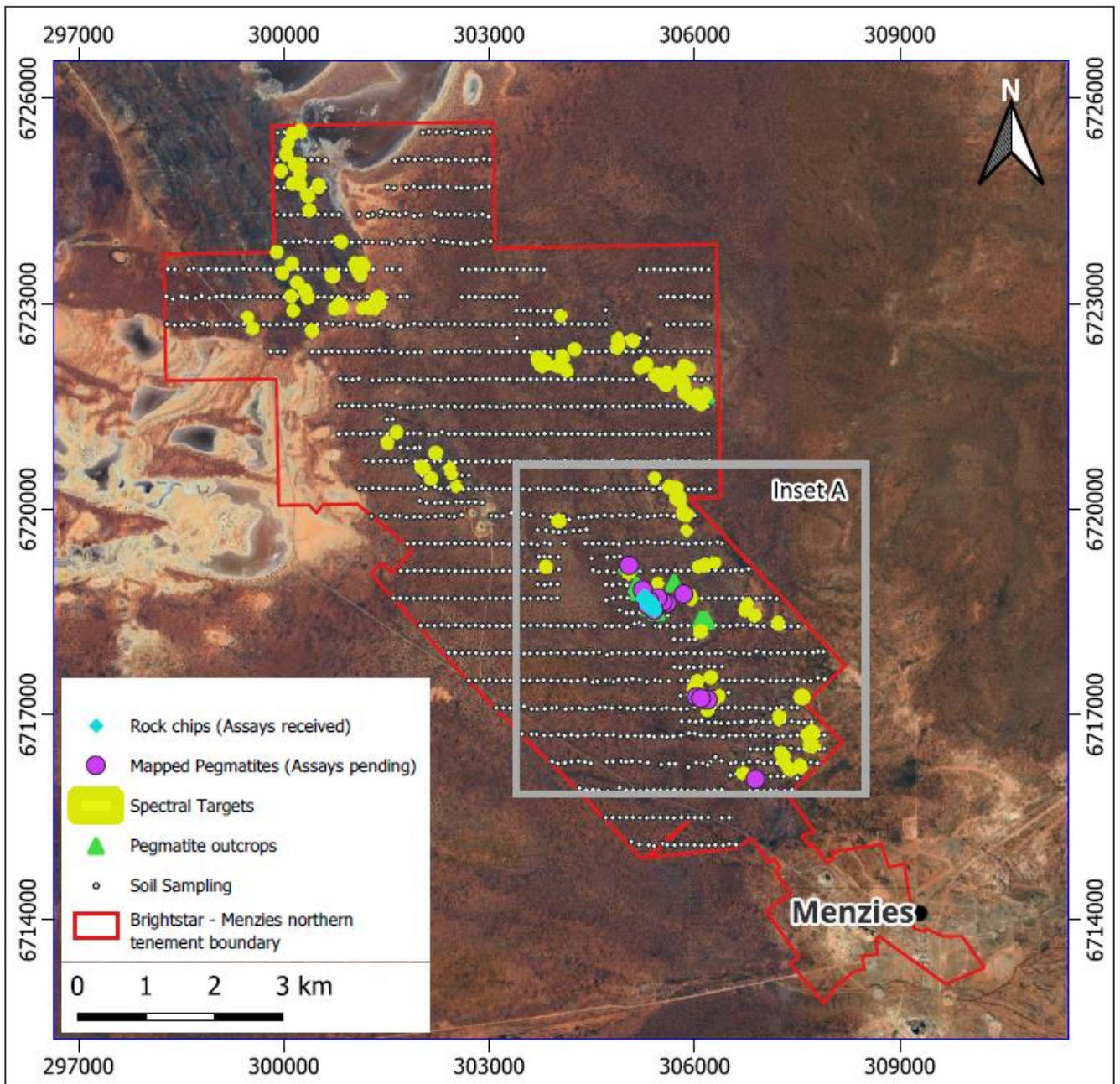


Figure 3 - Menzies Northern Trend with hyperspectral targets and mapped pegmatite outcrops

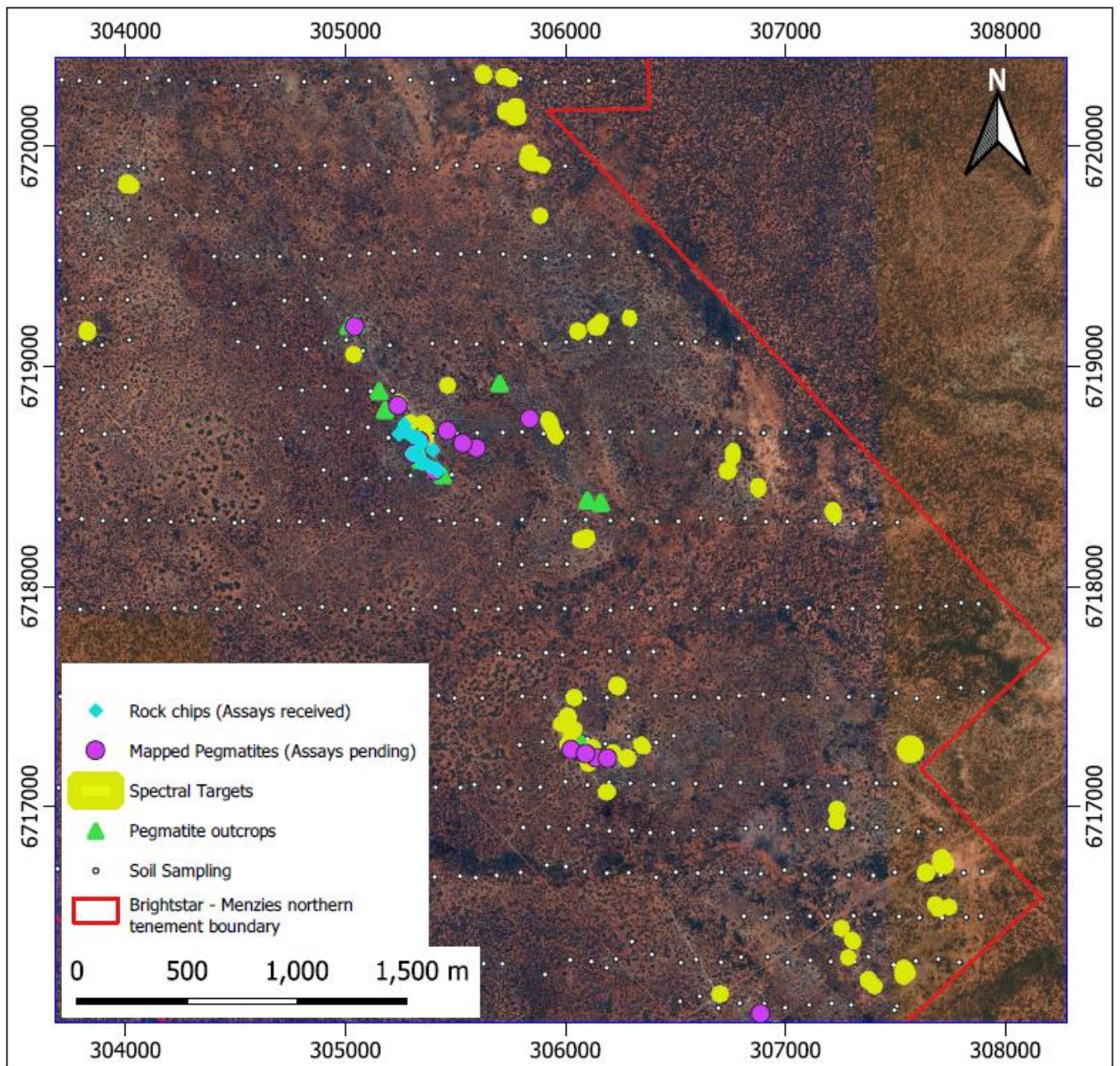


Figure 4 (Inset A) - Field mapping of pegmatite outcrops and rock chip locations

ROCK CHIP SAMPLING

Initial field reconnaissance and sampling of twenty-eight rock chips from a weathered outcrop over 500m strike length (blue icons in *Figure 4*) were assayed for lithium and other indicator geochemistry as part of first-pass efforts to determine regional prospectivity.

A subsequent Brightstar sampling program was conducted in December 2023 in which a further twelve rock chip samples were taken from additional outcropping pegmatites identified (purple icons in *Figure 4*) from

follow-up field mapping and the recently completed heritage survey. Assays for these rock chips are pending. Figures 5 and 6 contain examples of the rock chips and observed pegmatite outcrops.

The preliminary sampling (refer Table 1 below) returned highly elevated lithium (up to 441ppm Li₂O) and key pathfinder element abundance, as well as critical characteristic low K/Rb and Nb/Ta ratios confirming the presence of a well fractionated pegmatite that has potential to host lithium (spodumene) mineralisation.

Given the strike length of the mapped / recorded pegmatite occurrences within the Northern Trend at Menzies, detailed follow up fieldwork is required to better refine the mineral fractionation trends that assist in understanding regional zonation in order to vector toward the most prospective target areas for exploration.

Table 1 - Rock Chip Assays. Refer to Table 3 for sample data co-ordinates and supporting information

| | Cs | Nb | Rb | Ta | Be | K | Li ₂ O | K/Rb | Nb/Ta |
|--------------------------|------------|------------|------------|------------|------------|----------|-------------------|--------------|--------------|
| <i>Highlighted Cells</i> | >20 | | >1000 | >20 | | | | <30 | <5 |
| UNITS | PPM | PPM | PPM | PPM | PPM | % | PPM | Ratio | Ratio |
| MLP001 | 70.7 | 26 | 3077 | 11 | 10 | 7.1 | 108 | 23 | 2.4 |
| MLP002 | 28.6 | 75 | 1307 | 26 | 9 | 3.1 | 80 | 24 | 2.9 |
| MLP003 | <0.3 | <10 | 4.5 | <10 | 11 | <0.1 | 58 | - | - |
| MLP004 | 45.3 | 44 | 1894 | 23 | 10 | 4.7 | 30 | 25 | 1.9 |
| MLP005 | 21.6 | 61 | 1103 | 13 | 8 | 3.2 | 112 | 29 | 4.7 |
| MLP006 | 36.1 | 89 | 1299 | 16 | 14 | 2.5 | 441 | 19 | 5.6 |
| MLP007 | 18.5 | 72 | 933 | 29 | 12 | 2.8 | 43 | 30 | 2.5 |
| MLP008 | 20.6 | 33 | 1114 | <10 | 8 | 3.6 | 34 | 32 | - |
| MLP009 | 38.7 | 91 | 1754 | 43 | 10 | 5.6 | BDL | 32 | 2.1 |
| MLP010 | 19.7 | 56 | 960 | 26 | 8 | 3.6 | BDL | 38 | 2.2 |
| MLP011 | 22.4 | 67 | 1022 | 30 | 11 | 2.8 | 41 | 27 | 2.2 |
| MLP012 | 11.1 | 114 | 365 | 37 | 18 | 0.9 | 93 | 25 | 3.1 |
| MLP013 | 8.6 | 36 | 423 | 17 | 12 | 2 | BDL | 47 | 2.1 |
| MLP014 | 17.2 | 67 | 659 | 46 | 46 | 2.3 | 47 | 35 | 1.5 |
| MLP015 | 19.5 | 37 | 697 | 25 | 12 | 2.5 | BDL | 36 | 1.5 |
| MLP016 | 62.6 | 20 | 2270 | 12 | 9 | 6.9 | BDL | 30 | 1.7 |
| MLP017 | 26.3 | 35 | 1177 | <10 | 11 | 3.9 | BDL | 33 | - |
| MLP018 | 12.2 | 57 | 556 | 35 | 12 | 2.5 | BDL | 45 | 1.6 |
| MLP019 | 18.9 | 65 | 734 | 32 | 10 | 2.9 | BDL | 40 | 2.0 |
| MLP020 | 0.9 | 82 | 24.1 | 21 | 10 | 0.2 | 37 | 83 | 3.9 |
| MLP021 | 5.7 | 54 | 256 | 16 | 12 | 0.8 | 80 | 31 | 3.4 |
| MLP022 | 40.6 | 82 | 1726 | 46 | 12 | 4.3 | 121 | 25 | 1.8 |
| MLP023 | 17.2 | 83 | 724 | 30 | 9 | 3 | BDL | 41 | 2.8 |
| MLP024 | 33.2 | 43 | 775 | 39 | 9 | 2.6 | BDL | 34 | 1.1 |
| MLP025 | 29.8 | 80 | 1508 | 27 | 10 | 5.7 | BDL | 38 | 3.0 |
| MLP026 | 29.7 | 35 | 1117 | 16 | 14 | 5.7 | BDL | 51 | 2.2 |
| MLP027 | 24.4 | 69 | 1595 | 14 | 8 | 4.9 | 43 | 31 | 4.9 |
| MLP028 | 23.4 | 87 | 1024 | 36 | 7 | 3.2 | 50 | 31 | 2.4 |



Figure 5 - Examples of pegmatite rock chip samples showing sample ID's



Figure 6 - Recently mapped pegmatites (assays pending)

REGIONAL GEOLOGY ANALOGUE

The nearest commercial lithium deposit to Brightstar’s Menzies Project is the Mt Ida Lithium Project (JORC MRE of 14.6Mt @ 1.2% Li₂O)⁴ owned by Delta Lithium Ltd, approximately 70km to the NW of Menzies.

Mt Ida was originally a high-grade underground gold mine, with last production reported in 2008 from high grade gold reefs similar to the main Menzies deposits. In September 2021, the “Mt Ida Gold/Copper Project” was sold by Ora Banda to TNT Mines Ltd (which subsequently became Delta Lithium)⁵. At the time of the acquisition, the project had a JORC2004-compliant Mineral Resource Estimate for gold mineralisation.

Subsequent to the completion of the acquisition by TNT Mines, lithium-bearing pegmatites were identified in historical drilling and on 28 September 2021 TNT Mines declared “Mt Ida – A New Lithium Province”⁶, and commented *“Initial investigations from available data shows pegmatite outcropping in 5 separate locations proximal to the main granitic intrusive, and along the contact with the western bounding mafic amphibolite units which host the high-grade Mt Ida Gold Copper lodes.”*

Brightstar is encouraged by the fact that the Menzies Northern Trend has a similar geological and structural setting to the Mt Ida Lithium Project (*Figure 7*), with a N-S trending greenstone belt bifurcated around a post-dated granitic intrusion to the north and pegmatite mineralisation in the western limb of the greenstone belt within mafic amphibolite host units and proximal to gold mineralisation.

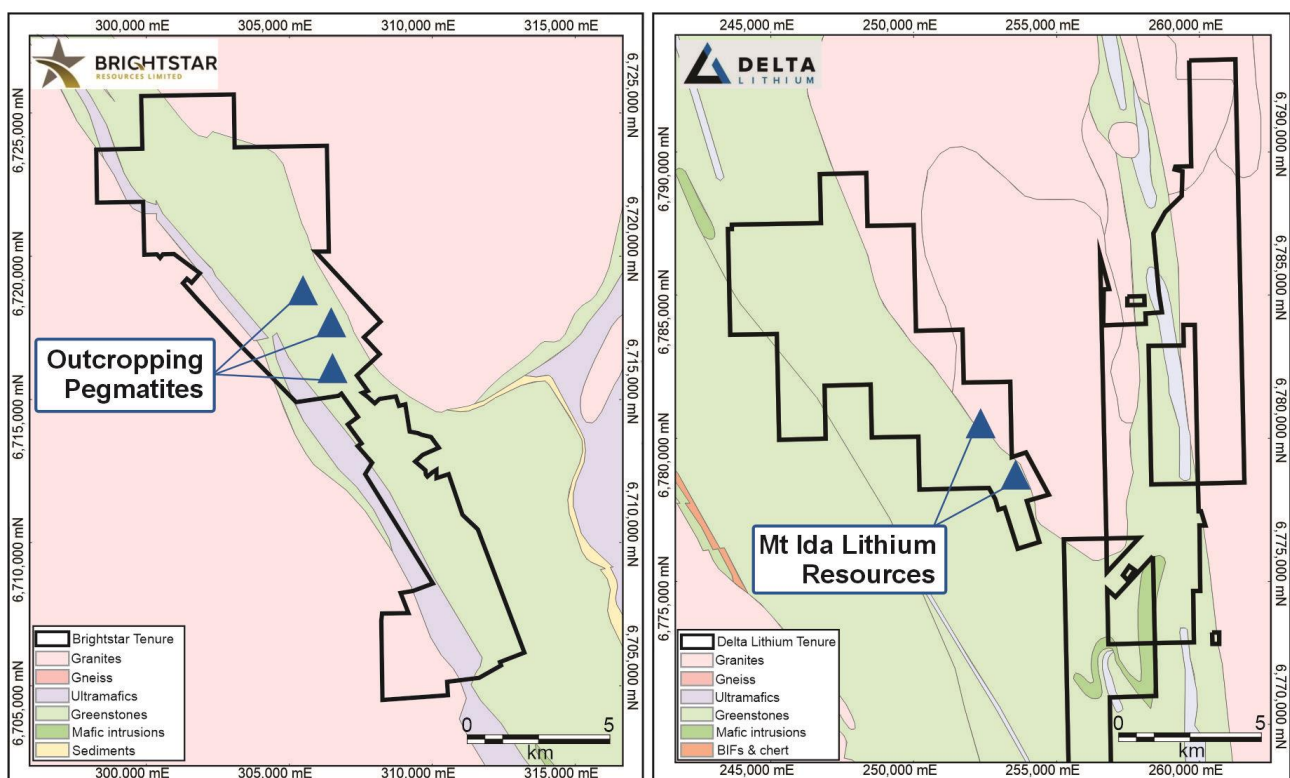


Figure 7 – Geological Map of the Menzies Project and Delta Lithium’s Mt Ida Lithium Project (on identical 5km scales)

FURTHER WORK

Following receipt of the December rock chip assays and analysis of the soil sampling program expected in the new year, Brightstar intends to conduct follow-up work to ascertain the potential of lithium-bearing pegmatites across the Northern Trend. This work will entail detailed specialist mapping and sampling of areas of outcropping pegmatites and areas identified from the soil survey, with a maiden lithium-focused program including follow-up drilling envisaged in 2024.

REFERENCES:

2. Refer Ora Banda Mining announcement dated 30 October 2023
https://cdn-api.markitdigital.com/apiman-gateway/ASX/asx-research/1.0/file/2924-02732268_PS-6A1177288
3. Refer Pantoro Limited announcements dated 10 November 2023
<https://cdn-api.markitdigital.com/apiman-gateway/ASX/asx-research/1.0/file/2924-02738216-6A1179798>
4. Refer Delta Lithium ASX release dated 3 October 2023 "Mt Ida Lithium Mineral Resource Estimate Update"
5. Refer Delta Lithium (TNT Mines Ltd) release dated 7 September 2021 "TNT to acquire high-grade Mt Ida Gold and Copper Project"
6. Refer Delta Lithium (TNT Mines Ltd) release dated 28 September 2021 "Mt Ida – A New Lithium Province"

FOR FURTHER INFORMATION, PLEASE CONTACT:

Alex Rovira

Managing Director

Phone: +61 431 894 303

Email: alex@brightstarresources.com.au

Investor Relations

Lucas Robinson

Phone: +61 408 228 889

Email: lucas@corporatetorytime.com

ABOUT BRIGHTSTAR RESOURCES

Brightstar Resources Limited is a Perth-based gold exploration and development company listed on the Australian Securities Exchange (**ASX: BTR**). In May 2023, Brightstar completed a merger with Kingwest Resources Limited via a Scheme of Arrangement which saw the strategic consolidation of Brightstar's Laverton Gold Project and Kingwest's Menzies Gold Project. Hosted in the prolific eastern goldfields of Western Australia and ideally located proximal to significant regional infrastructure, Brightstar has a significant **JORC Mineral Resource of 22Mt @ 1.5g/t Au for 1,036,000oz Au**.

Importantly, Brightstar owns the Brightstar processing plant (currently on care and maintenance), a 60-man accommodation camp and non-processing infrastructure, located 30km SE of Laverton and within 60km of the Company's 511,000oz Au JORC Resource within the Laverton Gold Project.

The Menzies Gold Project includes the high-grade gold field which has historically produced 787,200oz at 18.9g/t Au between 1895-1995. In 2023, Brightstar commenced mining operations at the Menzies Gold Project via a Profit Share Joint Venture with BML Ventures Pty Ltd.

Brightstar aims to grow its mineral resource inventory with the view to becoming a substantial future ASX gold developer and producer.

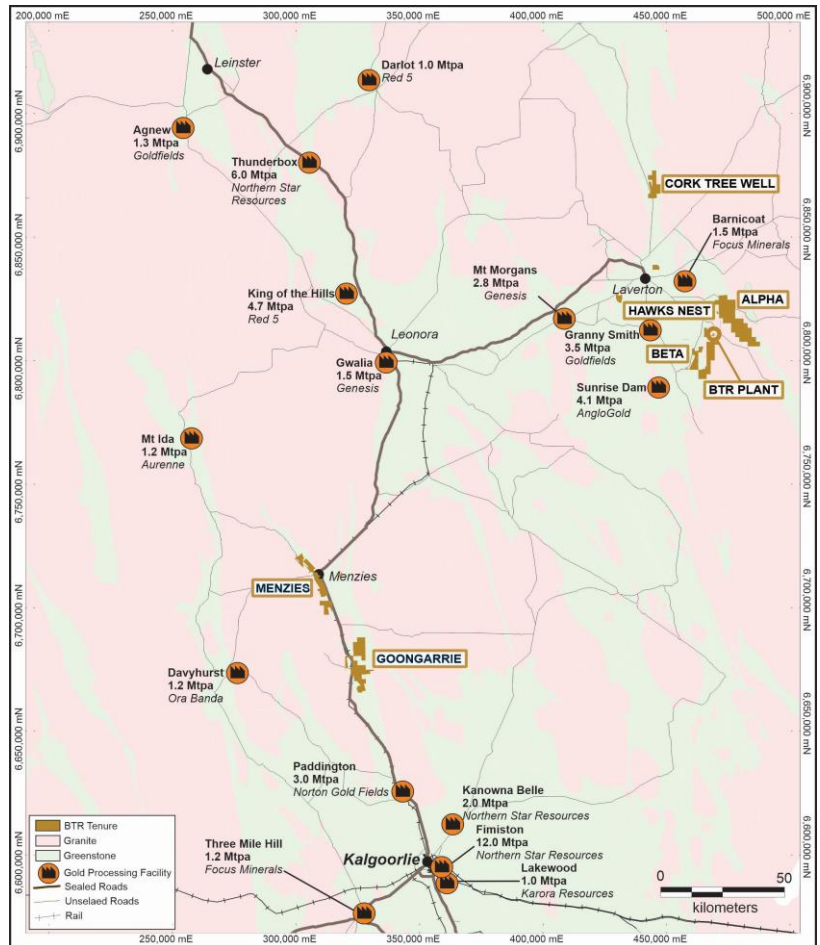


Table 2 - Consolidated JORC Resources of Laverton & Menzies Gold Projects

| Location | Au Cut-off (g/t) | Measured | | | Indicated | | | Inferred | | | Total | | |
|--|------------------|------------|------------|-----------|--------------|------------|------------|---------------|------------|------------|---------------|------------|--------------|
| | | Kt | g/t Au | Koz | Kt | g/t Au | Koz | Kt | g/t Au | Koz | Kt | g/t Au | Koz |
| Alpha | 0.5 | 623 | 1.6 | 33 | 374 | 2.1 | 25 | 455 | 3.3 | 48 | 1,452 | 2.3 | 106 |
| Beta | 0.5 | 345 | 1.7 | 19 | 576 | 1.6 | 29 | 961 | 1.7 | 54 | 1,882 | 1.7 | 102 |
| Cork Tree Well | 0.5 | - | - | - | 3,036 | 1.6 | 157 | 3,501 | 1.3 | 146 | 6,357 | 1.4 | 303 |
| Total – Laverton | 0 | 968 | 1.6 | 52 | 3,986 | 1.6 | 211 | 4,917 | 1.6 | 248 | 9,691 | 1.6 | 511 |
| Lady Shenton System (Pericles, Lady Shenton, Stirling) | 0.5 | - | - | - | 2,770 | 1.3 | 119 | 4,200 | 1.3 | 171 | 6,970 | 1.2 | 287 |
| Yunndaga | 0.5 | - | - | - | 1,270 | 1.3 | 53 | 2,050 | 1.4 | 90 | 3,310 | 1.3 | 144 |
| Yunndaga (UG) | 2.0 | - | - | - | - | - | - | 110 | 3.3 | 12 | 110 | 3.3 | 12 |
| Lady Harriet System (Warrior, Lady Harriet, Bellenger) | 0.5 | - | - | - | 520 | 1.3 | 22 | 590 | 1.1 | 21 | 1,110 | 1.2 | 43 |
| Link Zone | 0.5 | - | - | - | 145 | 1.2 | 6 | 470 | 1.0 | 16 | 615 | 1.1 | 21 |
| Selkirk | 0.5 | - | - | - | 30 | 6.3 | 6 | 140 | 1.2 | 5 | 170 | 2.1 | 12 |
| Lady Irene | 0.5 | - | - | - | - | - | - | 100 | 1.7 | 6 | 100 | 1.7 | 6 |
| Total – Menzies | 0 | - | - | - | 4,725 | 1.4 | 206 | 7,660 | 1.3 | 321 | 12,385 | 1.3 | 525 |
| Total – BTR | | 968 | 1.7 | 52 | 8,721 | 1.5 | 417 | 12,577 | 1.4 | 569 | 22,076 | 1.5 | 1,036 |

Refer Note 1 below. Note some rounding discrepancies may occur.
 Pericles, Lady Shenton & Stirling consolidated into Lady Shenton System; Warrior, Lady Harriet & Bellenger consolidated into Lady Harriet System.

Note: This Announcement contains references to Brightstar's JORC Mineral Resources, extracted from the ASX announcements titled "Maiden Link Zone Mineral Resource" dated 15 November 2023 and "Cork Tree Well Resource Upgrade Delivers 1Moz Group MRE" dated 23 June 2023.

Forward-Looking Statements

This document may include forward-looking statements. Forward-looking statements include, but are not limited to, statements concerning Brightstar Resources Limited's planned exploration program and other statements that are not historical facts. When used in this document, the words such as "could," "plan," "expect," "intend," "may", "potential," "should," and similar expressions are forward-looking statements. Although Brightstar believes that its expectations reflected in these forward- looking statements are reasonable, such statements involve risks and uncertainties and no assurance can be given that further exploration will result in the estimation of a Mineral Resource.

Competent Person Statement – Exploration

The information in this report that relates to Exploration results at the Menzies Gold Project is based on information compiled by Ms Elizabeth Laursen B Earth Sci (Hons) GradDip AppFin, who is a Member of the Australasian Institute of Geoscientists. Ms Laursen has sufficient experience that is relevant to the style of mineralisation, type of deposit under consideration and to the activity that they are undertaking to qualify as a Competent Person as defined in the 2012 edition of the 'Australasian Code for Reporting of Exploration Results, Mineral Resources and Ore Reserves' and consents to the inclusion in this report of the matters based on their information in the form and context in which they appear.

Competent Person Statement – Mineral Resources

The information in this report that relates to Mineral Resources at the Menzies Gold Project (excluding the Link Zone Gold Deposit) is based on information compiled by Mr Mark Zammit who is a Member of the Australian Institute of Geoscientists. Mr Zammit is a Principal Consultant Geologist at Cube Consulting. Mr Zammit has sufficient experience that is relevant to the style of mineralisation, type of deposit under consideration and to the activity that they are undertaking to qualify as a Competent Person as defined in the 2012 edition of the 'Australasian Code for Reporting of Exploration Results, Mineral Resources and Ore Reserves' and consents to the inclusion in this report of the matters based on their information in the form and context in which they appear.

The information in this report that relates to Mineral Resources at the Link Zone Gold Deposit located within the Menzies Gold Project, and Cork Tree Well Gold deposit within the Laverton Gold Project, and the information in this report is based on, and fairly represents, information and supporting documentation compiled by Kevin Crossling holding a B.Sc. Honours in Geology. Mr. Crossling is the Principal Geologist at ABGM Pty Ltd and is a registered member with South African Council for Natural Scientific Professionals (SACNASP), and a member of the Australian Institute of Mining and Metallurgy (AUSIMM). with over 22 years of experience. Mr. Crossling has sufficient experience which is relevant to the style of mineralisation and type of deposit under consideration and to the activity which he is undertaking to qualify as a Competent Person as defined in the JORC Code.

The information in this report that relates to Mineral Resources at the Alpha and Beta Gold deposits within the Laverton Gold Project is based on information compiled by Mr Richard Maddocks. Mr Maddocks is a Fellow of the Australasian Institute of Mining and Metallurgy (AusIMM) and has sufficient experience which is relevant to the style of mineralisation and type of deposit under consideration and to the activity he has undertaken to qualify as a "Competent Person" as that term is defined in the 2012 Edition of the "Australasian Code for Reporting of Exploration Results, Mineral Resources and Ore Reserves (JORC Code 2012)". Mr Maddocks consents to the inclusion in this announcement of the matters based in this information in the form and context in which it appears. Mr Maddocks was employed as a contractor of Brightstar.

Compliance Statement

With reference to previously reported Exploration Results and Mineral Resources, the Company confirms that it is not aware of any new information or data that materially affects the information included in the original market announcement and, in the case of estimates of Mineral Resources that all material assumptions and technical parameters underpinning the estimates in the relevant market announcement continue to apply and have not materially changed. The company confirms that the form and context in which the Competent Person's findings are presented have not been materially modified from the original market announcement.

APPENDIX 1:

ROCK CHIPS

Notes for Appendix 1 & Table 1:

- All reconnaissance rock chip samples collected are listed in Table 3, results displayed include a selected suite of lithium pathfinder elements.
- All elements in parts per million (ppm), except for K as %.
- Sample location and orientation information coordinates are MGA94 Zone 51 and AHD.
- See Table 1 (Assay results) and Appendix 3 (JORC Tables) for additional details.
- Type is outcrop sampled unless otherwise noted
- BDL - below detection level.

Table 3 - GPS Coordinates of Rock Chips samples

| Sample ID | Easting | Northing | RL | Tenement | Type | Assay Status |
|-----------|---------|----------|-----|----------|---------------------|--------------------|
| MLP001 | 305421 | 6718527 | 419 | P29/2585 | Rock Chip | Received – Table 1 |
| MLP002 | 305421 | 6718527 | 419 | P29/2585 | Rock Chip | |
| MLP003 | 305413 | 6718537 | 420 | P29/2585 | Rock Chip | |
| MLP004 | 305389 | 6718544 | 422 | P29/2585 | Rock Chip | |
| MLP005 | 305370 | 6718554 | 423 | P29/2585 | Rock Chip | |
| MLP006 | 305397 | 6718620 | 422 | P29/2585 | Rock Chip | |
| MLP007 | 305347 | 6718560 | 423 | P29/2585 | Rock Chip | |
| MLP008 | 305347 | 6718560 | 423 | P29/2585 | Rock Chip | |
| MLP009 | 305334 | 6718586 | 425 | P29/2585 | Rock Chip | |
| MLP010 | 305334 | 6718586 | 425 | P29/2585 | Rock Chip | |
| MLP011 | 305301 | 6718604 | 425 | P29/2585 | Rock Chip | |
| MLP012 | 305301 | 6718604 | 425 | P29/2585 | Rock Chip | |
| MLP013 | 305325 | 6718619 | 427 | P29/2585 | Rock Chip | |
| MLP014 | 305346 | 6718650 | 427 | P29/2585 | Rock Chip | |
| MLP015 | 305337 | 6718662 | 428 | P29/2585 | Rock Chip | |
| MLP016 | 305337 | 6718662 | 428 | P29/2585 | Rock Chip | |
| MLP017 | 305337 | 6718662 | 428 | P29/2585 | Rock Chip | |
| MLP018 | 305331 | 6718676 | 427 | P29/2585 | Rock Chip | |
| MLP019 | 305331 | 6718676 | 427 | P29/2585 | Rock Chip | |
| MLP020 | 305316 | 6718679 | 428 | P29/2585 | Rock Chip | |
| MLP021 | 305316 | 6718679 | 428 | P29/2585 | Rock Chip | |
| MLP022 | 305304 | 6718682 | 428 | P29/2585 | Rock Chip | |
| MLP023 | 305288 | 6718697 | 427 | P29/2585 | Rock Chip | |
| MLP024 | 305274 | 6718704 | 426 | P29/2585 | Rock Chip | |
| MLP025 | 305274 | 6718704 | 426 | P29/2585 | Rock Chip | |
| MLP026 | 305243 | 6718694 | 424 | P29/2585 | Rock Chip | |
| MLP027 | 305243 | 6718694 | 424 | P29/2585 | Rock Chip | |
| MLP028 | 305268 | 6718737 | 425 | P29/2585 | Rock Chip | |
| MLP029 | 306887 | 6716059 | 423 | P29/2583 | Rock Chip | Assays Pending |
| MLP030 | 306139 | 6717222 | 421 | P29/2580 | Rock Chip | |
| MLP031 | 306026 | 6717259 | 416 | P29/2580 | Rock Chip (Subcrop) | |
| MLP032 | 305837 | 6718763 | 420 | P29/2585 | Rock Chip | |

| | | | | | |
|--------|--------|---------|-----|----------|---------------------|
| MLP033 | 305595 | 6718630 | 420 | P29/2585 | Rock Chip |
| MLP034 | 305533 | 6718651 | 423 | P29/2585 | Rock Chip |
| MLP035 | 305462 | 6718709 | 423 | P29/2585 | Rock Chip |
| MLP036 | 305337 | 6718662 | 429 | P29/2585 | Rock Chip |
| MLP037 | 305238 | 6718823 | 422 | P29/2585 | Rock Chip |
| MLP038 | 305041 | 6719182 | 415 | P29/2584 | Rock Chip |
| MLP039 | 305405 | 6718528 | 427 | P29/2585 | Rock Chip (Subcrop) |
| MLP040 | 305309 | 6718603 | 431 | P29/2585 | Rock Chip |

APPENDIX 2:

SOIL SAMPLING

Notes for Appendix 2:

- All soil samples collected are listed in Table 4.
- With the exception of ACS52655, which was a rock sample, all other samples collected were soil.
- Sample location and orientation information coordinates are MGA Zone 51 and AHD.
- See Appendix 3 (JORC Tables) for additional details.

Table 4 - Soil Sample Coordinates

| # | Sample ID | Easting | Northing | RL |
|----|-----------|---------|----------|-----|
| 1 | ACS51501 | 303028 | 6719905 | 476 |
| 2 | ACS51502 | 303100 | 6719901 | 475 |
| 3 | ACS51503 | 303196 | 6719901 | 473 |
| 4 | ACS51504 | 303603 | 6719913 | 474 |
| 5 | ACS51505 | 303289 | 6719490 | 472 |
| 6 | ACS51506 | 303404 | 6719511 | 475 |
| 7 | ACS51507 | 303320 | 6719948 | 477 |
| 8 | ACS51508 | 303422 | 6719884 | 478 |
| 9 | ACS51509 | 303497 | 6719935 | 478 |
| 10 | ACS51510 | 303487 | 6719498 | 481 |
| 11 | ACS51511 | 303612 | 6719495 | 477 |
| 12 | ACS51512 | 303701 | 6719482 | 481 |
| 13 | ACS51513 | 303810 | 6719511 | 483 |
| 14 | ACS51514 | 303888 | 6719493 | 481 |
| 15 | ACS51515 | 303887 | 6719492 | 480 |
| 16 | ACS51516 | 304089 | 6719500 | 479 |
| 17 | ACS51517 | 304089 | 6719500 | 479 |
| 18 | ACS51518 | 304403 | 6719501 | 482 |
| 19 | ACS51519 | 304507 | 6719500 | 486 |
| 20 | ACS51520 | 304599 | 6719501 | 485 |
| 21 | ACS51521 | 304701 | 6719499 | 484 |
| 22 | ACS51522 | 303805 | 6719310 | 476 |
| 23 | ACS51523 | 303886 | 6719307 | 478 |
| 24 | ACS51524 | 304009 | 6719303 | 481 |
| 25 | ACS51525 | 304906 | 6719108 | 495 |

| # | Sample ID | Easting | Northing | RL |
|-----|-----------|---------|----------|-----|
| 657 | ACS52724 | 302397 | 6721903 | 485 |
| 658 | ACS52725 | 302501 | 6721892 | 486 |
| 659 | ACS52726 | 302603 | 6721895 | 485 |
| 660 | ACS52727 | 302713 | 6721907 | 486 |
| 661 | ACS52728 | 302807 | 6721898 | 486 |
| 662 | ACS52729 | 303211 | 6721491 | 488 |
| 663 | ACS52730 | 303299 | 6721502 | 488 |
| 664 | ACS52731 | 303105 | 6721495 | 489 |
| 665 | ACS52732 | 303008 | 6721500 | 486 |
| 666 | ACS52733 | 302906 | 6721501 | 487 |
| 667 | ACS52734 | 302809 | 6721500 | 487 |
| 668 | ACS52735 | 302706 | 6721496 | 486 |
| 669 | ACS52736 | 302598 | 6721497 | 486 |
| 670 | ACS52737 | 302499 | 6721498 | 486 |
| 671 | ACS52738 | 302703 | 6721099 | 486 |
| 672 | ACS52739 | 302806 | 6721097 | 485 |
| 673 | ACS52740 | 302902 | 6721101 | 487 |
| 674 | ACS52741 | 303003 | 6721098 | 486 |
| 675 | ACS52742 | 303598 | 6721101 | 489 |
| 676 | ACS52743 | 303704 | 6721098 | 490 |
| 677 | ACS52744 | 303805 | 6721104 | 491 |
| 678 | ACS52745 | 303907 | 6721108 | 506 |
| 679 | ACS52746 | 304006 | 6721097 | 489 |
| 680 | ACS52747 | 304106 | 6721100 | 492 |
| 681 | ACS52748 | 303495 | 6721094 | 475 |

| | | | | |
|----|----------|--------|---------|-----|
| 26 | ACS51526 | 304821 | 6719079 | 491 |
| 27 | ACS51527 | 304494 | 6719286 | 488 |
| 28 | ACS51528 | 305080 | 6719072 | 494 |
| 29 | ACS51529 | 305003 | 6719121 | 496 |
| 30 | ACS51530 | 303937 | 6719673 | 484 |
| 31 | ACS51531 | 303705 | 6719700 | 479 |
| 32 | ACS51532 | 303829 | 6719695 | 483 |
| 33 | ACS51533 | 304013 | 6719911 | 480 |
| 34 | ACS51534 | 304081 | 6719902 | 483 |
| 35 | ACS51535 | 304167 | 6719852 | 481 |
| 36 | ACS51536 | 304308 | 6719881 | 480 |
| 37 | ACS51537 | 304383 | 6719881 | 480 |
| 38 | ACS51538 | 304416 | 6719705 | 484 |
| 39 | ACS51539 | 304324 | 6719689 | 480 |
| 40 | ACS51540 | 304229 | 6719688 | 482 |
| 41 | ACS51541 | 304111 | 6719673 | 478 |
| 42 | ACS51542 | 304015 | 6719668 | 482 |
| 43 | ACS51543 | 303789 | 6719904 | 477 |
| 44 | ACS51544 | 303894 | 6719891 | 482 |
| 45 | ACS51545 | 303993 | 6718705 | 476 |
| 46 | ACS51546 | 303905 | 6718693 | 475 |
| 47 | ACS51547 | 303801 | 6718708 | 473 |
| 48 | ACS51548 | 303709 | 6718695 | 471 |
| 49 | ACS51549 | 303807 | 6718897 | 472 |
| 50 | ACS51550 | 303706 | 6718904 | 472 |
| 51 | ACS51551 | 303898 | 6718907 | 477 |
| 52 | ACS51552 | 303999 | 6718905 | 477 |
| 53 | ACS51553 | 304016 | 6719121 | 478 |
| 54 | ACS51554 | 303893 | 6719097 | 481 |
| 55 | ACS51555 | 303813 | 6719104 | 475 |
| 56 | ACS51556 | 303703 | 6719101 | 479 |
| 57 | ACS51557 | 303605 | 6719097 | 479 |
| 58 | ACS51558 | 303726 | 6719307 | 479 |
| 59 | ACS51559 | 304401 | 6718307 | 479 |
| 60 | ACS51560 | 304496 | 6718289 | 477 |
| 61 | ACS51561 | 304533 | 6718297 | 479 |
| 62 | ACS51562 | 304696 | 6718299 | 479 |
| 63 | ACS51563 | 304791 | 6718295 | 483 |
| 64 | ACS51564 | 304900 | 6718299 | 482 |
| 65 | ACS51565 | 305093 | 6718491 | 491 |
| 66 | ACS51566 | 305215 | 6718890 | 498 |
| 67 | ACS51567 | 305115 | 6718888 | 497 |
| 68 | ACS51568 | 305006 | 6718892 | 495 |
| 69 | ACS51569 | 304905 | 6718909 | 492 |
| 70 | ACS51570 | 304802 | 6718892 | 490 |
| 71 | ACS51571 | 304703 | 6718902 | 489 |
| 72 | ACS51572 | 304722 | 6719096 | 491 |
| 73 | ACS51573 | 306007 | 6718102 | 490 |
| 74 | ACS51574 | 305916 | 6718100 | 490 |
| 75 | ACS51575 | 305801 | 6718100 | 489 |

| | | | | |
|-----|----------|--------|---------|-----|
| 682 | ACS52749 | 303403 | 6721097 | 469 |
| 683 | ACS52750 | 303301 | 6721096 | 465 |
| 684 | ACS52751 | 303199 | 6721100 | 467 |
| 685 | ACS52752 | 303099 | 6721096 | 462 |
| 686 | ACS52753 | 304296 | 6721100 | 474 |
| 687 | ACS52754 | 304398 | 6721099 | 466 |
| 688 | ACS52755 | 304495 | 6721098 | 469 |
| 689 | ACS52756 | 304609 | 6721091 | 479 |
| 690 | ACS52757 | 304694 | 6721098 | 471 |
| 691 | ACS52758 | 304203 | 6721100 | 469 |
| 692 | ACS52759 | 303701 | 6720693 | 492 |
| 693 | ACS52760 | 303904 | 6720701 | 493 |
| 694 | ACS52761 | 303604 | 6720699 | 471 |
| 695 | ACS52762 | 303496 | 6720696 | 469 |
| 696 | ACS52763 | 303800 | 6720706 | 490 |
| 697 | ACS52764 | 303995 | 6720699 | 473 |
| 698 | ACS52765 | 304102 | 6720710 | 494 |
| 699 | ACS52766 | 304204 | 6720701 | 469 |
| 700 | ACS52767 | 303000 | 6717508 | 489 |
| 701 | ACS52768 | 302916 | 6717494 | 472 |
| 702 | ACS52769 | 302801 | 6717500 | 488 |
| 703 | ACS52770 | 302702 | 6717499 | 467 |
| 704 | ACS52771 | 303304 | 6717098 | 468 |
| 705 | ACS52772 | 303394 | 6717119 | 470 |
| 706 | ACS52773 | 303203 | 6717100 | 472 |
| 707 | ACS52774 | 303103 | 6717101 | 471 |
| 708 | ACS52775 | 303903 | 6716699 | 493 |
| 709 | ACS52776 | 304010 | 6716713 | 497 |
| 710 | ACS52777 | 304095 | 6716697 | 496 |
| 711 | ACS52778 | 303801 | 6716700 | 495 |
| 712 | ACS52779 | 303703 | 6717500 | 471 |
| 713 | ACS52780 | 303794 | 6717507 | 476 |
| 714 | ACS52781 | 303905 | 6717500 | 472 |
| 715 | ACS52782 | 304002 | 6717495 | 475 |
| 716 | ACS52783 | 304102 | 6717501 | 477 |
| 717 | ACS52784 | 303101 | 6717499 | 491 |
| 718 | ACS52785 | 303203 | 6717498 | 491 |
| 719 | ACS52786 | 303300 | 6717501 | 491 |
| 720 | ACS52787 | 303405 | 6717509 | 491 |
| 721 | ACS52788 | 303503 | 6717502 | 492 |
| 722 | ACS52789 | 302605 | 6717900 | 487 |
| 723 | ACS52790 | 302805 | 6717902 | 486 |
| 724 | ACS52791 | 303593 | 6717500 | 473 |
| 725 | ACS52792 | 302701 | 6717906 | 486 |
| 726 | ACS52793 | 302404 | 6717906 | 470 |
| 727 | ACS52794 | 302497 | 6717906 | 465 |
| 728 | ACS52795 | 302403 | 6718299 | 461 |
| 729 | ACS52796 | 302303 | 6718311 | 463 |
| 730 | ACS52797 | 302199 | 6718301 | 461 |
| 731 | ACS52798 | 302098 | 6718304 | 460 |

| | | | | |
|-----|----------|--------|---------|-----|
| 76 | ACS51576 | 305700 | 6718103 | 490 |
| 77 | ACS51577 | 304792 | 6717902 | 483 |
| 78 | ACS51578 | 304894 | 6717907 | 484 |
| 79 | ACS51579 | 304999 | 6717893 | 488 |
| 80 | ACS51580 | 305104 | 6717902 | 485 |
| 81 | ACS51581 | 305199 | 6717906 | 487 |
| 82 | ACS51582 | 305309 | 6717897 | 488 |
| 83 | ACS51583 | 305408 | 6717906 | 491 |
| 84 | ACS51584 | 305495 | 6717896 | 488 |
| 85 | ACS51585 | 305593 | 6717891 | 484 |
| 86 | ACS51586 | 305695 | 6717898 | 489 |
| 87 | ACS51587 | 305797 | 6717903 | 491 |
| 88 | ACS51588 | 305882 | 6717907 | 484 |
| 89 | ACS51589 | 305996 | 6717900 | 491 |
| 90 | ACS51590 | 305012 | 6718281 | 486 |
| 91 | ACS51591 | 305123 | 6718330 | 489 |
| 92 | ACS51592 | 305195 | 6718344 | 492 |
| 93 | ACS51593 | 305252 | 6718309 | 494 |
| 94 | ACS51594 | 305428 | 6718298 | 494 |
| 95 | ACS51595 | 305596 | 6718303 | 494 |
| 96 | ACS51596 | 305376 | 6718500 | 499 |
| 97 | ACS51597 | 305695 | 6718286 | 492 |
| 98 | ACS51598 | 305494 | 6718288 | 494 |
| 99 | ACS51599 | 305296 | 6718505 | 500 |
| 100 | ACS51600 | 305483 | 6718508 | 494 |
| 101 | ACS51601 | 304600 | 6719088 | 486 |
| 102 | ACS51602 | 305397 | 6718683 | 503 |
| 103 | ACS51604 | 305803 | 6718305 | 494 |
| 104 | ACS51605 | 305608 | 6718451 | 496 |
| 105 | ACS51606 | 305013 | 6718703 | 490 |
| 106 | ACS51607 | 304916 | 6718722 | 487 |
| 107 | ACS51608 | 305102 | 6718724 | 494 |
| 108 | ACS51609 | 305195 | 6718676 | 499 |
| 109 | ACS51610 | 305297 | 6718709 | 503 |
| 110 | ACS51611 | 304810 | 6718702 | 488 |
| 111 | ACS51612 | 304704 | 6718672 | 485 |
| 112 | ACS51613 | 304905 | 6719313 | 486 |
| 113 | ACS51614 | 304900 | 6718530 | 485 |
| 114 | ACS51615 | 305003 | 6718490 | 489 |
| 115 | ACS51616 | 305199 | 6718491 | 492 |
| 116 | ACS51617 | 304513 | 6719113 | 487 |
| 117 | ACS51618 | 304512 | 6719113 | 485 |
| 118 | ACS51619 | 304722 | 6719300 | 487 |
| 119 | ACS51620 | 304825 | 6719303 | 486 |
| 120 | ACS51621 | 306097 | 6717899 | 488 |
| 121 | ACS51622 | 306205 | 6717892 | 488 |
| 122 | ACS51623 | 306302 | 6717904 | 494 |
| 123 | ACS51624 | 306400 | 6717704 | 492 |
| 124 | ACS51625 | 306287 | 6717703 | 492 |
| 125 | ACS51626 | 306202 | 6717707 | 491 |

| | | | | |
|-----|----------|--------|---------|-----|
| 732 | ACS52799 | 301998 | 6718302 | 462 |
| 733 | ACS52800 | 302704 | 6718297 | 485 |
| 734 | ACS52801 | 302599 | 6718303 | 486 |
| 735 | ACS52802 | 302506 | 6718310 | 484 |
| 736 | ACS52803 | 302899 | 6718295 | 468 |
| 737 | ACS52804 | 302798 | 6718306 | 485 |
| 738 | ACS52805 | 302006 | 6719105 | 463 |
| 739 | ACS52806 | 301908 | 6719106 | 459 |
| 740 | ACS52807 | 301803 | 6719099 | 457 |
| 741 | ACS52808 | 301706 | 6719101 | 459 |
| 742 | ACS52809 | 301698 | 6718701 | 457 |
| 743 | ACS52810 | 301601 | 6718700 | 461 |
| 744 | ACS52811 | 301795 | 6718701 | 461 |
| 745 | ACS52812 | 301896 | 6718698 | 461 |
| 746 | ACS52813 | 301993 | 6718698 | 458 |
| 747 | ACS52814 | 302090 | 6718703 | 461 |
| 748 | ACS52815 | 302102 | 6719102 | 479 |
| 749 | ACS52816 | 302302 | 6719100 | 479 |
| 750 | ACS52817 | 302200 | 6719106 | 479 |
| 751 | ACS52818 | 302404 | 6719103 | 481 |
| 752 | ACS52819 | 302501 | 6719098 | 482 |
| 753 | ACS52820 | 302610 | 6719097 | 480 |
| 754 | ACS52821 | 302696 | 6719095 | 483 |
| 755 | ACS52822 | 302799 | 6719096 | 484 |
| 756 | ACS52823 | 302895 | 6719101 | 486 |
| 757 | ACS52824 | 302998 | 6719098 | 487 |
| 758 | ACS52825 | 304002 | 6718302 | 493 |
| 759 | ACS52826 | 304107 | 6718301 | 497 |
| 760 | ACS52827 | 304305 | 6718300 | 498 |
| 761 | ACS52828 | 304206 | 6718294 | 497 |
| 762 | ACS52829 | 303897 | 6718299 | 474 |
| 763 | ACS52830 | 303801 | 6718307 | 473 |
| 764 | ACS52831 | 303700 | 6718306 | 468 |
| 765 | ACS52832 | 306202 | 6718703 | 516 |
| 766 | ACS52833 | 306304 | 6718702 | 516 |
| 767 | ACS52834 | 306102 | 6718699 | 513 |
| 768 | ACS52835 | 306009 | 6718700 | 515 |
| 769 | ACS52836 | 305901 | 6718694 | 519 |
| 770 | ACS52837 | 305802 | 6718703 | 514 |
| 771 | ACS52838 | 305716 | 6718700 | 520 |
| 772 | ACS52839 | 305599 | 6718698 | 519 |
| 773 | ACS52840 | 301103 | 6720307 | 455 |
| 774 | ACS52841 | 305504 | 6718698 | 519 |
| 775 | ACS52842 | 306400 | 6718706 | 500 |
| 776 | ACS52843 | 306503 | 6718696 | 501 |
| 777 | ACS52844 | 306600 | 6718701 | 494 |
| 778 | ACS52845 | 306701 | 6718703 | 495 |
| 779 | ACS52846 | 306796 | 6718696 | 495 |
| 780 | ACS52847 | 306901 | 6718698 | 493 |
| 781 | ACS52848 | 307001 | 6718701 | 495 |

| | | | | |
|-----|----------|--------|---------|-----|
| 126 | ACS51627 | 306091 | 6717701 | 490 |
| 127 | ACS51628 | 305987 | 6717690 | 494 |
| 128 | ACS51629 | 305911 | 6717699 | 493 |
| 129 | ACS51630 | 305789 | 6717686 | 490 |
| 130 | ACS51631 | 305701 | 6717698 | 486 |
| 131 | ACS51633 | 306009 | 6717505 | 493 |
| 132 | ACS51634 | 306090 | 6717491 | 492 |
| 133 | ACS51635 | 306189 | 6717495 | 492 |
| 134 | ACS51636 | 306284 | 6717495 | 492 |
| 135 | ACS51637 | 306409 | 6717503 | 491 |
| 136 | ACS51638 | 306502 | 6717502 | 493 |
| 137 | ACS51639 | 306585 | 6717499 | 493 |
| 138 | ACS51640 | 306696 | 6717494 | 493 |
| 139 | ACS51641 | 306790 | 6717504 | 496 |
| 140 | ACS51642 | 306492 | 6717322 | 497 |
| 141 | ACS51643 | 306413 | 6717291 | 495 |
| 142 | ACS51644 | 306287 | 6717319 | 497 |
| 143 | ACS51645 | 306181 | 6717285 | 495 |
| 144 | ACS51646 | 306101 | 6717307 | 495 |
| 145 | ACS51647 | 306002 | 6717308 | 495 |
| 146 | ACS51648 | 305895 | 6717294 | 490 |
| 147 | ACS51650 | 305194 | 6717513 | 485 |
| 148 | ACS51651 | 305300 | 6717484 | 483 |
| 149 | ACS51652 | 305423 | 6717505 | 487 |
| 150 | ACS51653 | 305496 | 6717493 | 487 |
| 151 | ACS51654 | 305622 | 6717493 | 491 |
| 152 | ACS51655 | 305792 | 6717280 | 491 |
| 153 | ACS51656 | 305804 | 6717501 | 488 |
| 154 | ACS51657 | 305905 | 6717496 | 492 |
| 155 | ACS51658 | 305522 | 6717086 | 490 |
| 156 | ACS51659 | 305586 | 6717100 | 490 |
| 157 | ACS51660 | 305696 | 6717087 | 491 |
| 158 | ACS51661 | 305795 | 6717082 | 488 |
| 159 | ACS51662 | 305885 | 6717088 | 493 |
| 160 | ACS51663 | 306000 | 6717113 | 492 |
| 161 | ACS51664 | 306101 | 6717098 | 495 |
| 162 | ACS51665 | 306198 | 6717110 | 497 |
| 163 | ACS51666 | 306295 | 6717105 | 496 |
| 164 | ACS51667 | 306401 | 6717099 | 496 |
| 165 | ACS51668 | 306489 | 6717105 | 495 |
| 166 | ACS51669 | 306592 | 6717104 | 492 |
| 167 | ACS51670 | 306706 | 6717093 | 495 |
| 168 | ACS51671 | 306795 | 6717110 | 499 |
| 169 | ACS51672 | 306895 | 6717103 | 497 |
| 170 | ACS51673 | 307000 | 6717098 | 498 |
| 171 | ACS51674 | 307103 | 6717089 | 496 |
| 172 | ACS51675 | 307194 | 6717095 | 499 |
| 173 | ACS51676 | 307273 | 6717108 | 499 |
| 174 | ACS51677 | 307414 | 6717106 | 498 |
| 175 | ACS51678 | 307498 | 6717105 | 503 |

| | | | | |
|-----|----------|--------|---------|-----|
| 782 | ACS52849 | 307101 | 6718707 | 496 |
| 783 | ACS52850 | 307197 | 6718695 | 492 |
| 784 | ACS52851 | 305202 | 6719095 | 511 |
| 785 | ACS52852 | 305203 | 6719097 | 509 |
| 786 | ACS52853 | 305503 | 6719112 | 491 |
| 787 | ACS52854 | 305595 | 6719102 | 494 |
| 788 | ACS52855 | 305395 | 6719105 | 510 |
| 789 | ACS52856 | 301785 | 6720709 | 469 |
| 790 | ACS52857 | 301714 | 6720701 | 465 |
| 791 | ACS52858 | 301620 | 6720708 | 462 |
| 792 | ACS52859 | 301506 | 6720712 | 460 |
| 793 | ACS52860 | 301414 | 6720705 | 460 |
| 794 | ACS52861 | 301304 | 6720700 | 454 |
| 795 | ACS52862 | 301195 | 6720710 | 459 |
| 796 | ACS52863 | 301192 | 6720299 | 458 |
| 797 | ACS52864 | 301297 | 6720308 | 457 |
| 798 | ACS52865 | 301389 | 6720305 | 455 |
| 799 | ACS52866 | 301500 | 6720305 | 458 |
| 800 | ACS52867 | 301594 | 6720300 | 457 |
| 801 | ACS52868 | 301699 | 6720298 | 463 |
| 802 | ACS52869 | 304719 | 6717875 | 479 |
| 803 | ACS52870 | 304603 | 6717912 | 477 |
| 804 | ACS52871 | 304518 | 6717905 | 478 |
| 805 | ACS52872 | 304416 | 6717898 | 476 |
| 806 | ACS52873 | 304317 | 6717906 | 475 |
| 807 | ACS52874 | 304223 | 6717901 | 473 |
| 808 | ACS52875 | 304194 | 6717492 | 479 |
| 809 | ACS52876 | 304293 | 6717497 | 476 |
| 810 | ACS52877 | 304395 | 6717512 | 482 |
| 811 | ACS52878 | 304510 | 6717479 | 479 |
| 812 | ACS52879 | 304580 | 6717489 | 482 |
| 813 | ACS52880 | 304695 | 6717502 | 481 |
| 814 | ACS52881 | 304774 | 6717502 | 481 |
| 815 | ACS52882 | 304815 | 6717483 | 480 |
| 816 | ACS52883 | 304888 | 6717511 | 484 |
| 817 | ACS52884 | 304996 | 6717509 | 478 |
| 818 | ACS52885 | 305090 | 6717525 | 482 |
| 819 | ACS52886 | 301913 | 6722293 | 458 |
| 820 | ACS52887 | 301807 | 6722288 | 461 |
| 821 | ACS52888 | 301709 | 6722287 | 460 |
| 822 | ACS52889 | 301002 | 6721893 | 457 |
| 823 | ACS52891 | 300822 | 6721908 | 458 |
| 824 | ACS52892 | 301095 | 6721907 | 463 |
| 825 | ACS52894 | 301584 | 6721516 | 462 |
| 826 | ACS52895 | 301699 | 6721485 | 461 |
| 827 | ACS52896 | 301806 | 6721485 | 466 |
| 828 | ACS52897 | 301889 | 6721487 | 466 |
| 829 | ACS52898 | 302004 | 6721490 | 465 |
| 830 | ACS52899 | 300907 | 6721895 | 456 |
| 831 | ACS52900 | 300006 | 6722303 | 454 |

| | | | | |
|-----|----------|--------|---------|-----|
| 176 | ACS51679 | 307707 | 6716897 | 502 |
| 177 | ACS51680 | 307605 | 6716887 | 499 |
| 178 | ACS51681 | 307515 | 6716891 | 501 |
| 179 | ACS51682 | 307415 | 6716905 | 503 |
| 180 | ACS51683 | 307306 | 6716903 | 500 |
| 181 | ACS51684 | 307188 | 6716897 | 496 |
| 182 | ACS51685 | 307100 | 6716893 | 496 |
| 183 | ACS51686 | 306996 | 6716897 | 495 |
| 184 | ACS51687 | 307499 | 6716701 | 498 |
| 185 | ACS51688 | 306200 | 6716889 | 493 |
| 186 | ACS51689 | 306100 | 6716914 | 490 |
| 187 | ACS51690 | 306015 | 6716900 | 493 |
| 188 | ACS51691 | 305923 | 6716908 | 493 |
| 189 | ACS51692 | 305808 | 6716905 | 490 |
| 190 | ACS51693 | 305916 | 6716733 | 489 |
| 191 | ACS51694 | 306002 | 6716727 | 486 |
| 192 | ACS51695 | 306088 | 6716705 | 488 |
| 193 | ACS51696 | 306189 | 6716697 | 489 |
| 194 | ACS51697 | 306287 | 6716699 | 493 |
| 195 | ACS51698 | 306413 | 6716678 | 491 |
| 196 | ACS51699 | 306503 | 6716702 | 492 |
| 197 | ACS51700 | 306602 | 6716697 | 494 |
| 198 | ACS51701 | 306710 | 6716702 | 494 |
| 199 | ACS51702 | 306821 | 6716700 | 494 |
| 200 | ACS51703 | 306890 | 6716907 | 497 |
| 201 | ACS51704 | 306820 | 6716901 | 493 |
| 202 | ACS51705 | 306582 | 6716892 | 493 |
| 203 | ACS51706 | 306685 | 6716900 | 496 |
| 204 | ACS51707 | 306489 | 6716881 | 494 |
| 205 | ACS51708 | 306386 | 6716881 | 491 |
| 206 | ACS51709 | 306303 | 6716891 | 498 |
| 207 | ACS51710 | 307314 | 6716295 | 498 |
| 208 | ACS51711 | 307378 | 6716317 | 497 |
| 209 | ACS51712 | 307206 | 6716295 | 495 |
| 210 | ACS51713 | 307113 | 6716301 | 497 |
| 211 | ACS51714 | 307011 | 6716292 | 500 |
| 212 | ACS51715 | 307492 | 6716281 | 498 |
| 213 | ACS51716 | 307896 | 6716705 | 502 |
| 214 | ACS51717 | 307811 | 6716699 | 501 |
| 215 | ACS51718 | 307706 | 6716688 | 501 |
| 216 | ACS51719 | 307605 | 6716688 | 500 |
| 217 | ACS51721 | 307507 | 6716092 | 499 |
| 218 | ACS51722 | 307495 | 6716075 | 498 |
| 219 | ACS51723 | 307593 | 6716298 | 500 |
| 220 | ACS51724 | 307695 | 6716307 | 496 |
| 221 | ACS51725 | 307791 | 6716292 | 499 |
| 222 | ACS51726 | 307889 | 6716502 | 501 |
| 223 | ACS51727 | 307822 | 6716496 | 499 |
| 224 | ACS51728 | 307713 | 6716494 | 500 |
| 225 | ACS51729 | 307609 | 6716495 | 496 |

| | | | | |
|-----|----------|--------|---------|-----|
| 832 | ACS52901 | 299907 | 6722303 | 452 |
| 833 | ACS52902 | 299805 | 6722302 | 452 |
| 834 | ACS52903 | 300609 | 6722302 | 457 |
| 835 | ACS52904 | 300508 | 6722299 | 456 |
| 836 | ACS52905 | 300410 | 6722301 | 453 |
| 837 | ACS52906 | 300698 | 6722306 | 455 |
| 838 | ACS52907 | 300796 | 6722304 | 451 |
| 839 | ACS52908 | 300889 | 6722302 | 455 |
| 840 | ACS52909 | 300995 | 6722302 | 453 |
| 841 | ACS52910 | 301086 | 6722303 | 456 |
| 842 | ACS52911 | 301199 | 6722311 | 455 |
| 843 | ACS52912 | 301291 | 6722311 | 458 |
| 844 | ACS52913 | 301392 | 6722322 | 458 |
| 845 | ACS52914 | 301493 | 6722305 | 457 |
| 846 | ACS52915 | 301482 | 6722308 | 459 |
| 847 | ACS52916 | 301584 | 6722300 | 457 |
| 848 | ACS52917 | 300809 | 6721506 | 458 |
| 849 | ACS52918 | 300893 | 6721510 | 459 |
| 850 | ACS52919 | 301001 | 6721512 | 462 |
| 851 | ACS52920 | 301097 | 6721508 | 460 |
| 852 | ACS52921 | 301192 | 6721506 | 460 |
| 853 | ACS52922 | 301894 | 6721111 | 472 |
| 854 | ACS52923 | 301992 | 6721108 | 470 |
| 855 | ACS52924 | 302094 | 6721505 | 466 |
| 856 | ACS52925 | 302194 | 6721507 | 463 |
| 857 | ACS52926 | 302309 | 6721128 | 467 |
| 858 | ACS52927 | 302215 | 6721093 | 468 |
| 859 | ACS52928 | 302118 | 6721091 | 472 |
| 860 | ACS52930 | 301290 | 6721885 | 454 |
| 861 | ACS52931 | 301395 | 6721885 | 457 |
| 862 | ACS52932 | 301506 | 6721890 | 457 |
| 863 | ACS52933 | 301580 | 6721897 | 458 |
| 864 | ACS52934 | 301688 | 6721901 | 459 |
| 865 | ACS52935 | 301811 | 6721890 | 459 |
| 866 | ACS52936 | 301896 | 6721905 | 462 |
| 867 | ACS52937 | 301992 | 6721886 | 462 |
| 868 | ACS52938 | 302076 | 6720706 | 473 |
| 869 | ACS52939 | 302196 | 6720699 | 484 |
| 870 | ACS52940 | 302283 | 6720706 | 479 |
| 871 | ACS52941 | 302407 | 6720698 | 473 |
| 872 | ACS52942 | 302504 | 6720686 | 470 |
| 873 | ACS52943 | 304491 | 6719893 | 478 |
| 874 | ACS52944 | 304572 | 6719901 | 479 |
| 875 | ACS52945 | 304685 | 6719914 | 485 |
| 876 | ACS52946 | 304792 | 6719902 | 482 |
| 877 | ACS52947 | 304907 | 6719915 | 482 |
| 878 | ACS52948 | 304991 | 6719905 | 486 |
| 879 | ACS52949 | 301615 | 6721106 | 466 |
| 880 | ACS52950 | 301509 | 6721098 | 462 |
| 881 | ACS52951 | 301409 | 6721107 | 460 |

| | | | | |
|-----|----------|--------|---------|-----|
| 226 | ACS51730 | 307518 | 6716500 | 494 |
| 227 | ACS51731 | 307406 | 6716509 | 495 |
| 228 | ACS51732 | 307310 | 6716503 | 493 |
| 229 | ACS51733 | 307192 | 6716502 | 492 |
| 230 | ACS51734 | 307111 | 6716502 | 495 |
| 231 | ACS51735 | 307009 | 6716495 | 496 |
| 232 | ACS51736 | 306911 | 6716497 | 495 |
| 233 | ACS51737 | 306812 | 6716502 | 492 |
| 234 | ACS51738 | 306889 | 6716694 | 493 |
| 235 | ACS51739 | 306996 | 6716711 | 491 |
| 236 | ACS51740 | 307090 | 6716691 | 493 |
| 237 | ACS51741 | 307222 | 6716678 | 492 |
| 238 | ACS51742 | 307289 | 6716689 | 497 |
| 239 | ACS51743 | 307400 | 6716687 | 498 |
| 240 | ACS51744 | 306395 | 6715909 | 492 |
| 241 | ACS51745 | 306290 | 6715897 | 491 |
| 242 | ACS51746 | 306181 | 6715897 | 491 |
| 243 | ACS51747 | 306086 | 6715874 | 489 |
| 244 | ACS51748 | 305993 | 6715890 | 489 |
| 245 | ACS51749 | 305894 | 6715905 | 490 |
| 246 | ACS51750 | 307419 | 6715907 | 496 |
| 247 | ACS51751 | 307315 | 6715889 | 494 |
| 248 | ACS51752 | 307190 | 6715893 | 494 |
| 249 | ACS51753 | 307108 | 6715901 | 494 |
| 250 | ACS51754 | 307014 | 6715888 | 497 |
| 251 | ACS51755 | 306907 | 6715902 | 492 |
| 252 | ACS51756 | 306804 | 6715896 | 498 |
| 253 | ACS51757 | 306793 | 6716106 | 496 |
| 254 | ACS51758 | 306904 | 6716104 | 499 |
| 255 | ACS51759 | 306999 | 6716086 | 496 |
| 256 | ACS51760 | 307108 | 6716099 | 497 |
| 257 | ACS51761 | 307210 | 6716106 | 497 |
| 258 | ACS51762 | 307300 | 6716099 | 495 |
| 259 | ACS51763 | 302899 | 6720098 | 473 |
| 260 | ACS51764 | 306696 | 6716084 | 494 |
| 261 | ACS51765 | 306610 | 6716137 | 495 |
| 262 | ACS51766 | 306521 | 6716115 | 493 |
| 263 | ACS51767 | 306230 | 6716307 | 494 |
| 264 | ACS51768 | 306303 | 6716386 | 493 |
| 265 | ACS51769 | 306393 | 6716328 | 493 |
| 266 | ACS51770 | 306595 | 6716305 | 497 |
| 267 | ACS51771 | 306525 | 6716291 | 494 |
| 268 | ACS51772 | 306708 | 6716292 | 494 |
| 269 | ACS51773 | 306798 | 6716316 | 497 |
| 270 | ACS51774 | 306919 | 6716317 | 496 |
| 271 | ACS51775 | 302698 | 6720107 | 469 |
| 272 | ACS51776 | 302798 | 6720105 | 470 |
| 273 | ACS51777 | 302595 | 6719920 | 466 |
| 274 | ACS51778 | 302488 | 6719894 | 464 |
| 275 | ACS51779 | 302413 | 6719897 | 464 |

| | | | | |
|-----|----------|--------|---------|-----|
| 882 | ACS52952 | 301309 | 6721109 | 459 |
| 883 | ACS52953 | 301212 | 6721103 | 456 |
| 884 | ACS52954 | 301118 | 6721100 | 458 |
| 885 | ACS52955 | 301008 | 6721108 | 455 |
| 886 | ACS52956 | 300909 | 6721102 | 455 |
| 887 | ACS52957 | 300804 | 6721097 | 454 |
| 888 | ACS52958 | 301901 | 6720296 | 461 |
| 889 | ACS52959 | 301811 | 6720301 | 462 |
| 890 | ACS52960 | 305104 | 6719916 | 485 |
| 891 | ACS52961 | 305196 | 6719886 | 486 |
| 892 | ACS52962 | 305311 | 6719898 | 483 |
| 893 | ACS52963 | 305416 | 6719905 | 485 |
| 894 | ACS52964 | 305506 | 6719916 | 488 |
| 895 | ACS52965 | 305597 | 6719912 | 481 |
| 896 | ACS52966 | 305696 | 6719899 | 488 |
| 897 | ACS52967 | 305815 | 6719910 | 484 |
| 898 | ACS52968 | 305895 | 6719899 | 486 |
| 899 | ACS52969 | 305999 | 6719911 | 485 |
| 900 | ACS52970 | 306394 | 6719505 | 489 |
| 901 | ACS52971 | 306331 | 6719521 | 487 |
| 902 | ACS52972 | 306219 | 6719509 | 487 |
| 903 | ACS52973 | 306108 | 6719500 | 487 |
| 904 | ACS52974 | 306017 | 6719506 | 490 |
| 905 | ACS52975 | 305909 | 6719491 | 491 |
| 906 | ACS52976 | 305817 | 6719498 | 493 |
| 907 | ACS52977 | 305717 | 6719511 | 488 |
| 908 | ACS52978 | 305607 | 6719522 | 488 |
| 909 | ACS52979 | 305524 | 6719511 | 488 |
| 910 | ACS52980 | 305419 | 6719513 | 489 |
| 911 | ACS52981 | 305313 | 6719525 | 485 |
| 912 | ACS52982 | 305218 | 6719516 | 486 |
| 913 | ACS52983 | 305107 | 6719514 | 483 |
| 914 | ACS52984 | 305019 | 6719504 | 487 |
| 915 | ACS52985 | 304890 | 6719489 | 487 |
| 916 | ACS52986 | 304813 | 6719499 | 484 |
| 917 | ACS52987 | 304295 | 6720692 | 469 |
| 918 | ACS52988 | 304400 | 6720699 | 474 |
| 919 | ACS52989 | 304499 | 6720700 | 474 |
| 920 | ACS52990 | 304614 | 6720690 | 475 |
| 921 | ACS52991 | 304706 | 6720699 | 474 |
| 922 | ACS52992 | 304803 | 6720719 | 475 |
| 923 | ACS52993 | 304914 | 6720690 | 473 |
| 924 | ACS52994 | 305008 | 6720703 | 476 |
| 925 | ACS52995 | 305108 | 6720704 | 477 |
| 926 | ACS52996 | 305197 | 6720703 | 478 |
| 927 | ACS52997 | 305294 | 6720695 | 480 |
| 928 | ACS52998 | 305405 | 6720702 | 478 |
| 929 | ACS52999 | 305497 | 6720710 | 483 |
| 930 | ACS53000 | 305617 | 6720718 | 481 |
| 931 | ACS53001 | 305702 | 6720701 | 483 |

| | | | | |
|-----|----------|--------|---------|-----|
| 276 | ACS51780 | 302301 | 6719910 | 463 |
| 277 | ACS51781 | 302211 | 6719899 | 465 |
| 278 | ACS51782 | 302106 | 6719891 | 461 |
| 279 | ACS51783 | 301990 | 6719893 | 462 |
| 280 | ACS51784 | 301904 | 6719893 | 457 |
| 281 | ACS51785 | 301792 | 6719884 | 456 |
| 282 | ACS51786 | 301681 | 6719904 | 457 |
| 283 | ACS51787 | 301621 | 6719908 | 458 |
| 284 | ACS51788 | 301495 | 6719897 | 456 |
| 285 | ACS51789 | 301418 | 6719906 | 457 |
| 286 | ACS51790 | 301277 | 6719900 | 457 |
| 287 | ACS51791 | 301983 | 6720125 | 468 |
| 288 | ACS51792 | 302083 | 6720094 | 464 |
| 289 | ACS51793 | 302203 | 6720094 | 468 |
| 290 | ACS51794 | 302296 | 6720100 | 471 |
| 291 | ACS51795 | 302388 | 6720096 | 472 |
| 292 | ACS51796 | 302516 | 6720110 | 470 |
| 293 | ACS51797 | 302597 | 6720108 | 471 |
| 294 | ACS51798 | 302702 | 6720498 | 472 |
| 295 | ACS51799 | 302696 | 6720702 | 468 |
| 296 | ACS51800 | 302498 | 6721100 | 468 |
| 297 | ACS51801 | 302398 | 6721504 | 462 |
| 298 | ACS51802 | 302895 | 6720306 | 466 |
| 299 | ACS51803 | 302810 | 6720298 | 470 |
| 300 | ACS51804 | 302697 | 6720299 | 470 |
| 301 | ACS51805 | 302621 | 6720291 | 469 |
| 302 | ACS51806 | 302488 | 6720287 | 475 |
| 303 | ACS51807 | 302397 | 6720313 | 474 |
| 304 | ACS51808 | 302288 | 6720299 | 469 |
| 305 | ACS51809 | 302210 | 6720329 | 467 |
| 306 | ACS51810 | 302013 | 6720335 | 464 |
| 307 | ACS51811 | 302067 | 6720301 | 467 |
| 308 | ACS51812 | 302212 | 6720489 | 477 |
| 309 | ACS51813 | 302113 | 6720499 | 472 |
| 310 | ACS51814 | 302015 | 6720500 | 467 |
| 311 | ACS51815 | 301987 | 6720694 | 472 |
| 312 | ACS51816 | 301917 | 6720695 | 470 |
| 313 | ACS51817 | 301981 | 6720902 | 477 |
| 314 | ACS51818 | 301912 | 6720898 | 474 |
| 315 | ACS51819 | 301701 | 6720904 | 468 |
| 316 | ACS51820 | 301806 | 6720892 | 469 |
| 317 | ACS51821 | 301711 | 6721099 | 473 |
| 318 | ACS51822 | 301806 | 6721108 | 472 |
| 319 | ACS51823 | 301504 | 6721313 | 466 |
| 320 | ACS51824 | 301589 | 6721319 | 465 |
| 321 | ACS51825 | 301498 | 6721522 | 464 |
| 322 | ACS51826 | 301403 | 6721523 | 461 |
| 323 | ACS51827 | 301318 | 6721504 | 460 |
| 324 | ACS51828 | 302603 | 6720496 | 474 |
| 325 | ACS51829 | 302605 | 6720705 | 470 |

| | | | | |
|-----|----------|--------|---------|-----|
| 932 | ACS53002 | 305814 | 6720709 | 481 |
| 933 | ACS53003 | 305920 | 6720708 | 480 |
| 934 | ACS53004 | 306009 | 6720687 | 483 |
| 935 | ACS53005 | 306129 | 6720702 | 489 |
| 936 | ACS53006 | 306216 | 6720715 | 486 |
| 937 | ACS53007 | 306219 | 6720297 | 480 |
| 938 | ACS53008 | 306105 | 6720299 | 483 |
| 939 | ACS53009 | 305996 | 6720293 | 483 |
| 940 | ACS53010 | 305909 | 6720293 | 482 |
| 941 | ACS53011 | 305796 | 6720309 | 482 |
| 942 | ACS53012 | 305706 | 6720288 | 481 |
| 943 | ACS53013 | 305623 | 6720311 | 484 |
| 944 | ACS53014 | 305489 | 6720305 | 484 |
| 945 | ACS53015 | 305393 | 6720289 | 484 |
| 946 | ACS53016 | 305294 | 6720303 | 475 |
| 947 | ACS53017 | 305201 | 6720310 | 478 |
| 948 | ACS53018 | 305108 | 6720297 | 477 |
| 949 | ACS53019 | 305007 | 6720296 | 482 |
| 950 | ACS53020 | 304908 | 6720295 | 479 |
| 951 | ACS53021 | 304812 | 6720294 | 482 |
| 952 | ACS53022 | 304690 | 6720314 | 481 |
| 953 | ACS53023 | 304589 | 6720279 | 480 |
| 954 | ACS53024 | 304509 | 6720277 | 479 |
| 955 | ACS53025 | 304406 | 6720292 | 475 |
| 956 | ACS53026 | 304281 | 6720289 | 481 |
| 957 | ACS53027 | 304197 | 6720301 | 481 |
| 958 | ACS53028 | 303594 | 6720287 | 471 |
| 959 | ACS53029 | 306416 | 6718296 | 490 |
| 960 | ACS53030 | 306514 | 6718296 | 492 |
| 961 | ACS53031 | 306615 | 6718311 | 493 |
| 962 | ACS53032 | 306706 | 6718309 | 492 |
| 963 | ACS53033 | 306817 | 6718311 | 491 |
| 964 | ACS53034 | 306912 | 6718295 | 492 |
| 965 | ACS53035 | 307008 | 6718295 | 495 |
| 966 | ACS53036 | 303709 | 6720304 | 473 |
| 967 | ACS53037 | 303789 | 6720299 | 476 |
| 968 | ACS53038 | 303881 | 6720294 | 473 |
| 969 | ACS53039 | 304000 | 6720290 | 478 |
| 970 | ACS53040 | 304098 | 6720310 | 477 |
| 971 | ACS53041 | 305715 | 6719110 | 487 |
| 972 | ACS53042 | 305798 | 6719101 | 490 |
| 973 | ACS53043 | 305909 | 6719105 | 493 |
| 974 | ACS53044 | 306003 | 6719111 | 493 |
| 975 | ACS53045 | 306112 | 6719113 | 493 |
| 976 | ACS53046 | 306201 | 6719109 | 493 |
| 977 | ACS53047 | 306303 | 6719109 | 492 |
| 978 | ACS53048 | 306412 | 6719105 | 492 |
| 979 | ACS53049 | 306527 | 6719105 | 493 |
| 980 | ACS53050 | 306591 | 6719114 | 495 |
| 981 | ACS53051 | 306690 | 6719107 | 490 |

| | | | | |
|-----|----------|--------|---------|-----|
| 326 | ACS51830 | 302405 | 6721098 | 467 |
| 327 | ACS51831 | 302302 | 6721497 | 461 |
| 328 | ACS51832 | 302197 | 6721896 | 463 |
| 329 | ACS51833 | 302288 | 6721900 | 464 |
| 330 | ACS51834 | 302099 | 6721898 | 463 |
| 331 | ACS51835 | 302286 | 6721883 | 461 |
| 332 | ACS51836 | 301994 | 6722700 | 459 |
| 333 | ACS51837 | 301798 | 6723104 | 456 |
| 334 | ACS51838 | 301697 | 6723501 | 452 |
| 335 | ACS51839 | 301493 | 6723900 | 449 |
| 336 | ACS51840 | 301292 | 6724300 | 450 |
| 337 | ACS51841 | 301404 | 6724298 | 454 |
| 338 | ACS51842 | 302994 | 6719487 | 466 |
| 339 | ACS51843 | 303100 | 6719496 | 466 |
| 340 | ACS51845 | 302000 | 6722295 | 460 |
| 341 | ACS51846 | 301903 | 6722710 | 459 |
| 342 | ACS51847 | 301809 | 6722694 | 457 |
| 343 | ACS51848 | 301700 | 6723105 | 455 |
| 344 | ACS51849 | 301507 | 6723505 | 453 |
| 345 | ACS51850 | 301581 | 6723507 | 453 |
| 346 | ACS51851 | 301430 | 6723897 | 452 |
| 347 | ACS51852 | 301227 | 6724285 | 456 |
| 348 | ACS51853 | 301097 | 6724308 | 455 |
| 349 | ACS51854 | 303194 | 6719504 | 472 |
| 350 | ACS51855 | 306398 | 6715497 | 493 |
| 351 | ACS51856 | 306504 | 6715498 | 493 |
| 352 | ACS51857 | 306198 | 6715501 | 495 |
| 353 | ACS51858 | 306097 | 6715497 | 487 |
| 354 | ACS51859 | 306000 | 6715499 | 488 |
| 355 | ACS51860 | 305907 | 6715502 | 489 |
| 356 | ACS51861 | 305806 | 6715503 | 491 |
| 357 | ACS51862 | 304699 | 6715501 | 483 |
| 358 | ACS51863 | 304801 | 6715498 | 481 |
| 359 | ACS51864 | 304905 | 6715501 | 481 |
| 360 | ACS51865 | 305002 | 6715503 | 482 |
| 361 | ACS51866 | 305099 | 6715503 | 485 |
| 362 | ACS51867 | 305200 | 6715498 | 485 |
| 363 | ACS51868 | 305299 | 6715499 | 484 |
| 364 | ACS51869 | 305393 | 6715504 | 485 |
| 365 | ACS51870 | 305496 | 6715499 | 486 |
| 366 | ACS51871 | 305602 | 6715500 | 487 |
| 367 | ACS51872 | 305697 | 6715493 | 488 |
| 368 | ACS51873 | 305000 | 6715900 | 485 |
| 369 | ACS51874 | 305100 | 6715899 | 486 |
| 370 | ACS51875 | 305204 | 6715894 | 487 |
| 371 | ACS51876 | 305499 | 6715899 | 490 |
| 372 | ACS51877 | 305404 | 6715902 | 487 |
| 373 | ACS51878 | 305300 | 6715900 | 485 |
| 374 | ACS51879 | 302306 | 6718702 | 467 |
| 375 | ACS51880 | 302397 | 6718700 | 466 |

| | | | | |
|------|----------|--------|---------|-----|
| 982 | ACS53052 | 306788 | 6719128 | 489 |
| 983 | ACS53053 | 306306 | 6718307 | 492 |
| 984 | ACS53054 | 307137 | 6718297 | 494 |
| 985 | ACS53055 | 307224 | 6718285 | 494 |
| 986 | ACS53056 | 307310 | 6718286 | 495 |
| 987 | ACS53057 | 307406 | 6718289 | 498 |
| 988 | ACS53058 | 307509 | 6718292 | 497 |
| 989 | ACS53059 | 307878 | 6717922 | 502 |
| 990 | ACS53060 | 307799 | 6717926 | 501 |
| 991 | ACS53061 | 307731 | 6717911 | 498 |
| 992 | ACS53062 | 307613 | 6717905 | 498 |
| 993 | ACS53063 | 307507 | 6717906 | 502 |
| 994 | ACS53064 | 307422 | 6717907 | 499 |
| 995 | ACS53065 | 307305 | 6717899 | 497 |
| 996 | ACS53066 | 307217 | 6717907 | 496 |
| 997 | ACS53067 | 307108 | 6717902 | 497 |
| 998 | ACS53068 | 307010 | 6717907 | 496 |
| 999 | ACS53069 | 306903 | 6717926 | 500 |
| 1000 | ACS53070 | 306797 | 6717890 | 496 |
| 1001 | ACS53071 | 306717 | 6717901 | 494 |
| 1002 | ACS53072 | 306589 | 6717899 | 495 |
| 1003 | ACS53073 | 306500 | 6717919 | 495 |
| 1004 | ACS53074 | 306386 | 6717899 | 495 |
| 1005 | ACS53075 | 306899 | 6717509 | 499 |
| 1006 | ACS53076 | 306991 | 6717487 | 504 |
| 1007 | ACS53077 | 307106 | 6717498 | 501 |
| 1008 | ACS53078 | 307192 | 6717494 | 505 |
| 1009 | ACS53079 | 307289 | 6717499 | 504 |
| 1010 | ACS53080 | 307397 | 6717503 | 498 |
| 1011 | ACS53081 | 307503 | 6717516 | 503 |
| 1012 | ACS53082 | 307597 | 6717491 | 502 |
| 1013 | ACS53083 | 307695 | 6717496 | 503 |
| 1014 | ACS53084 | 307798 | 6717540 | 506 |
| 1015 | ACS53085 | 307898 | 6717521 | 507 |
| 1016 | ACS53086 | 305410 | 6717087 | 492 |
| 1017 | ACS53087 | 305309 | 6717085 | 490 |
| 1018 | ACS53088 | 305211 | 6717100 | 488 |
| 1019 | ACS53089 | 305113 | 6717084 | 486 |
| 1020 | ACS53090 | 305018 | 6717096 | 486 |
| 1021 | ACS53091 | 304909 | 6717108 | 485 |
| 1022 | ACS53092 | 304802 | 6717126 | 488 |
| 1023 | ACS53093 | 304789 | 6717098 | 485 |
| 1024 | ACS53094 | 304692 | 6717107 | 482 |
| 1025 | ACS53095 | 304611 | 6717109 | 483 |
| 1026 | ACS53096 | 304514 | 6717089 | 482 |
| 1027 | ACS53097 | 304409 | 6717080 | 480 |
| 1028 | ACS53098 | 304317 | 6717099 | 478 |
| 1029 | ACS53099 | 304209 | 6717093 | 483 |
| 1030 | ACS53100 | 304115 | 6717084 | 481 |
| 1031 | ACS53101 | 303980 | 6717105 | 476 |

| | | | | |
|-----|----------|--------|---------|-----|
| 376 | ACS51881 | 302498 | 6718695 | 465 |
| 377 | ACS51882 | 302203 | 6718705 | 465 |
| 378 | ACS51883 | 302597 | 6718700 | 465 |
| 379 | ACS51884 | 302203 | 6719498 | 466 |
| 380 | ACS51885 | 301802 | 6719498 | 458 |
| 381 | ACS51886 | 301898 | 6719503 | 460 |
| 382 | ACS51887 | 301997 | 6719506 | 461 |
| 383 | ACS51888 | 302101 | 6719497 | 458 |
| 384 | ACS51889 | 302704 | 6718700 | 466 |
| 385 | ACS51890 | 302799 | 6718690 | 463 |
| 386 | ACS51891 | 302897 | 6718700 | 465 |
| 387 | ACS51892 | 303010 | 6718700 | 464 |
| 388 | ACS51893 | 303100 | 6718698 | 469 |
| 389 | ACS51894 | 302894 | 6719496 | 460 |
| 390 | ACS51895 | 302797 | 6719506 | 466 |
| 391 | ACS51896 | 302701 | 6719506 | 466 |
| 392 | ACS51897 | 302605 | 6719499 | 462 |
| 393 | ACS51898 | 302500 | 6719503 | 464 |
| 394 | ACS51899 | 302398 | 6719505 | 475 |
| 395 | ACS51900 | 302300 | 6719497 | 468 |
| 396 | ACS51901 | 303101 | 6719100 | 469 |
| 397 | ACS51902 | 303199 | 6719102 | 469 |
| 398 | ACS51903 | 303298 | 6719098 | 471 |
| 399 | ACS51904 | 303403 | 6719103 | 472 |
| 400 | ACS51905 | 303502 | 6719105 | 473 |
| 401 | ACS51906 | 303602 | 6718307 | 473 |
| 402 | ACS51907 | 303500 | 6718299 | 475 |
| 403 | ACS51908 | 303602 | 6718697 | 472 |
| 404 | ACS51909 | 303502 | 6718695 | 470 |
| 405 | ACS51910 | 303405 | 6718701 | 469 |
| 406 | ACS51911 | 303305 | 6718702 | 468 |
| 407 | ACS51912 | 303202 | 6718702 | 469 |
| 408 | ACS51913 | 304100 | 6717902 | 474 |
| 409 | ACS51914 | 304001 | 6717904 | 477 |
| 410 | ACS51915 | 303900 | 6717904 | 477 |
| 411 | ACS51916 | 303794 | 6717896 | 469 |
| 412 | ACS51917 | 303701 | 6717901 | 471 |
| 413 | ACS51918 | 303594 | 6717900 | 469 |
| 414 | ACS51919 | 303508 | 6717894 | 472 |
| 415 | ACS51920 | 303400 | 6717900 | 469 |
| 416 | ACS51921 | 303297 | 6717903 | 470 |
| 417 | ACS51922 | 303202 | 6717905 | 469 |
| 418 | ACS51923 | 303104 | 6717903 | 470 |
| 419 | ACS51924 | 303403 | 6718299 | 471 |
| 420 | ACS51925 | 303297 | 6718302 | 468 |
| 421 | ACS51926 | 303197 | 6718298 | 469 |
| 422 | ACS51927 | 303103 | 6718299 | 465 |
| 423 | ACS51928 | 303001 | 6718299 | 467 |
| 424 | ACS51929 | 302898 | 6717894 | 461 |
| 425 | ACS51930 | 302998 | 6717898 | 467 |

| | | | | |
|------|----------|--------|---------|-----|
| 1032 | ACS53102 | 303913 | 6717097 | 472 |
| 1033 | ACS53103 | 303811 | 6717087 | 474 |
| 1034 | ACS53104 | 303696 | 6717085 | 469 |
| 1035 | ACS53105 | 303618 | 6717085 | 469 |
| 1036 | ACS53106 | 303507 | 6717125 | 474 |
| 1037 | ACS53107 | 303478 | 6716720 | 472 |
| 1038 | ACS53108 | 303618 | 6716718 | 472 |
| 1039 | ACS53109 | 303690 | 6716717 | 474 |
| 1040 | ACS53110 | 305796 | 6716701 | 482 |
| 1041 | ACS53111 | 305687 | 6716687 | 484 |
| 1042 | ACS53112 | 305593 | 6716677 | 484 |
| 1043 | ACS53113 | 305520 | 6716684 | 484 |
| 1044 | ACS53114 | 305405 | 6716681 | 479 |
| 1045 | ACS53115 | 305328 | 6716693 | 480 |
| 1046 | ACS53116 | 305216 | 6716686 | 479 |
| 1047 | ACS53117 | 305127 | 6716691 | 477 |
| 1048 | ACS53118 | 305017 | 6716688 | 478 |
| 1049 | ACS53119 | 304912 | 6716684 | 476 |
| 1050 | ACS53120 | 304812 | 6716709 | 477 |
| 1051 | ACS53121 | 304717 | 6716704 | 477 |
| 1052 | ACS53122 | 304604 | 6716705 | 477 |
| 1053 | ACS53123 | 304518 | 6716718 | 479 |
| 1054 | ACS53124 | 304402 | 6716703 | 471 |
| 1055 | ACS53125 | 304290 | 6716690 | 469 |
| 1056 | ACS53126 | 304195 | 6716708 | 469 |
| 1057 | ACS53127 | 303918 | 6716316 | 476 |
| 1058 | ACS53128 | 304002 | 6716291 | 470 |
| 1059 | ACS53129 | 304105 | 6716299 | 467 |
| 1060 | ACS53130 | 304198 | 6716313 | 474 |
| 1061 | ACS53131 | 304301 | 6716323 | 468 |
| 1062 | ACS53132 | 304397 | 6716311 | 473 |
| 1063 | ACS53133 | 304482 | 6716295 | 470 |
| 1064 | ACS53134 | 304717 | 6716312 | 480 |
| 1065 | ACS53135 | 304804 | 6716314 | 475 |
| 1066 | ACS53136 | 304925 | 6716321 | 475 |
| 1067 | ACS53137 | 304998 | 6716314 | 480 |
| 1068 | ACS53138 | 305084 | 6716324 | 479 |
| 1069 | ACS53139 | 306188 | 6716268 | 499 |
| 1070 | ACS53140 | 306118 | 6716296 | 498 |
| 1071 | ACS53141 | 306022 | 6716303 | 500 |
| 1072 | ACS53142 | 305907 | 6716237 | 496 |
| 1073 | ACS53144 | 305714 | 6716285 | 492 |
| 1074 | ACS53145 | 305628 | 6716286 | 492 |
| 1075 | ACS53146 | 305510 | 6716276 | 490 |
| 1076 | ACS53147 | 302025 | 6725495 | 450 |
| 1077 | ACS53148 | 302116 | 6725513 | 454 |
| 1078 | ACS53149 | 302226 | 6725506 | 453 |
| 1079 | ACS53150 | 302325 | 6725508 | 455 |
| 1080 | ACS53151 | 302403 | 6725521 | 452 |
| 1081 | ACS53152 | 302507 | 6725506 | 450 |

| | | | | |
|-----|----------|--------|---------|-----|
| 426 | ACS51931 | 305603 | 6715895 | 485 |
| 427 | ACS51932 | 305700 | 6715904 | 486 |
| 428 | ACS51933 | 305898 | 6715895 | 491 |
| 429 | ACS51934 | 305805 | 6715901 | 487 |
| 430 | ACS51935 | 303495 | 6720297 | 470 |
| 431 | ACS51936 | 303405 | 6720300 | 449 |
| 432 | ACS51937 | 303299 | 6720299 | 472 |
| 433 | ACS51938 | 303203 | 6720298 | 469 |
| 434 | ACS51939 | 303101 | 6720299 | 466 |
| 435 | ACS51940 | 302603 | 6723503 | 456 |
| 436 | ACS51941 | 302701 | 6723499 | 456 |
| 437 | ACS51942 | 302803 | 6723501 | 455 |
| 438 | ACS51943 | 302899 | 6723501 | 456 |
| 439 | ACS51944 | 303001 | 6720303 | 471 |
| 440 | ACS51945 | 302805 | 6720695 | 463 |
| 441 | ACS51946 | 302904 | 6720706 | 468 |
| 442 | ACS51947 | 302995 | 6720694 | 463 |
| 443 | ACS51948 | 303100 | 6720701 | 466 |
| 444 | ACS51949 | 303200 | 6720702 | 465 |
| 445 | ACS51950 | 303297 | 6720703 | 471 |
| 446 | ACS51951 | 303401 | 6720703 | 469 |
| 447 | ACS51962 | 302996 | 6723501 | 459 |
| 448 | ACS51963 | 303099 | 6723499 | 456 |
| 449 | ACS51964 | 303200 | 6723504 | 458 |
| 450 | ACS51965 | 303306 | 6723504 | 458 |
| 451 | ACS51966 | 303401 | 6723504 | 455 |
| 452 | ACS51967 | 303502 | 6723501 | 455 |
| 453 | ACS51968 | 303600 | 6723502 | 456 |
| 454 | ACS51969 | 303694 | 6723503 | 457 |
| 455 | ACS51970 | 303800 | 6723498 | 458 |
| 456 | ACS51989 | 305200 | 6723500 | 467 |
| 457 | ACS51990 | 305298 | 6723500 | 462 |
| 458 | ACS51991 | 305406 | 6723504 | 466 |
| 459 | ACS51992 | 305501 | 6723499 | 465 |
| 460 | ACS51993 | 305605 | 6723502 | 468 |
| 461 | ACS51994 | 305699 | 6723498 | 468 |
| 462 | ACS51995 | 305801 | 6723509 | 467 |
| 463 | ACS51996 | 305898 | 6723501 | 472 |
| 464 | ACS51997 | 306001 | 6723503 | 471 |
| 465 | ACS51998 | 306096 | 6723503 | 471 |
| 466 | ACS51999 | 306202 | 6723500 | 469 |
| 467 | ACS52510 | 305502 | 6723100 | 468 |
| 468 | ACS52511 | 305605 | 6723104 | 467 |
| 469 | ACS52512 | 305696 | 6723101 | 471 |
| 470 | ACS52513 | 305803 | 6723099 | 470 |
| 471 | ACS52514 | 305901 | 6723114 | 468 |
| 472 | ACS52515 | 305997 | 6723097 | 471 |
| 473 | ACS52516 | 306092 | 6723096 | 469 |
| 474 | ACS52517 | 306197 | 6723104 | 471 |
| 475 | ACS52528 | 303401 | 6723102 | 456 |

| | | | | |
|------|----------|--------|---------|-----|
| 1082 | ACS53153 | 302600 | 6725491 | 452 |
| 1083 | ACS53154 | 302689 | 6725495 | 454 |
| 1084 | ACS53155 | 302800 | 6725508 | 453 |
| 1085 | ACS53156 | 302915 | 6725501 | 456 |
| 1086 | ACS53157 | 306603 | 6715104 | 514 |
| 1087 | ACS53158 | 306503 | 6715116 | 514 |
| 1088 | ACS53159 | 306415 | 6715096 | 513 |
| 1089 | ACS53160 | 306300 | 6715099 | 512 |
| 1090 | ACS53161 | 306099 | 6715098 | 512 |
| 1091 | ACS53162 | 305998 | 6715100 | 511 |
| 1092 | ACS53163 | 302010 | 6725112 | 450 |
| 1093 | ACS53164 | 306206 | 6715094 | 512 |
| 1094 | ACS53165 | 301512 | 6724702 | 450 |
| 1095 | ACS53166 | 301610 | 6724692 | 450 |
| 1096 | ACS53167 | 301788 | 6724697 | 450 |
| 1097 | ACS53168 | 303005 | 6725512 | 453 |
| 1098 | ACS53169 | 303006 | 6725105 | 451 |
| 1099 | ACS53170 | 302919 | 6725117 | 449 |
| 1100 | ACS53171 | 302810 | 6725099 | 451 |
| 1101 | ACS53172 | 302721 | 6725099 | 449 |
| 1102 | ACS53173 | 302614 | 6725090 | 448 |
| 1103 | ACS53174 | 302507 | 6725103 | 450 |
| 1104 | ACS53175 | 302401 | 6725095 | 446 |
| 1105 | ACS53176 | 302299 | 6725109 | 451 |
| 1106 | ACS53177 | 302220 | 6725092 | 448 |
| 1107 | ACS53178 | 302108 | 6725119 | 449 |
| 1108 | ACS53179 | 301915 | 6725103 | 450 |
| 1109 | ACS53180 | 301815 | 6725117 | 452 |
| 1110 | ACS53181 | 301727 | 6725108 | 454 |
| 1111 | ACS53182 | 301623 | 6725086 | 453 |
| 1112 | ACS53183 | 301898 | 6724715 | 454 |
| 1113 | ACS53184 | 301994 | 6724696 | 451 |
| 1114 | ACS53185 | 302104 | 6724700 | 451 |
| 1115 | ACS53186 | 302179 | 6724711 | 450 |
| 1116 | ACS53187 | 302275 | 6724707 | 452 |
| 1117 | ACS53188 | 302394 | 6724711 | 448 |
| 1118 | ACS53189 | 300204 | 6725504 | 474 |
| 1119 | ACS53190 | 300103 | 6725503 | 479 |
| 1120 | ACS53191 | 300009 | 6725506 | 487 |
| 1121 | ACS53192 | 299908 | 6725499 | 483 |
| 1122 | ACS53193 | 299902 | 6725099 | 485 |
| 1123 | ACS53194 | 299998 | 6725100 | 493 |
| 1124 | ACS53195 | 300206 | 6725100 | 476 |
| 1125 | ACS53196 | 300297 | 6725103 | 470 |
| 1126 | ACS53197 | 300400 | 6725104 | 471 |
| 1127 | ACS53198 | 300499 | 6725101 | 472 |
| 1128 | ACS53199 | 300606 | 6725093 | 471 |
| 1129 | ACS53200 | 300602 | 6724700 | 473 |
| 1130 | ACS53201 | 300103 | 6725098 | 490 |
| 1131 | ACS53202 | 300502 | 6724700 | 482 |

| | | | | |
|-----|----------|--------|---------|-----|
| 476 | ACS52529 | 303305 | 6723100 | 461 |
| 477 | ACS52530 | 303199 | 6723101 | 456 |
| 478 | ACS52531 | 303097 | 6723097 | 457 |
| 479 | ACS52532 | 303003 | 6723098 | 460 |
| 480 | ACS52533 | 302904 | 6723098 | 460 |
| 481 | ACS52534 | 302797 | 6723100 | 460 |
| 482 | ACS52535 | 302704 | 6723106 | 460 |
| 483 | ACS52536 | 302600 | 6723098 | 459 |
| 484 | ACS52537 | 303398 | 6722903 | 461 |
| 485 | ACS52538 | 304698 | 6722909 | 467 |
| 486 | ACS52545 | 304001 | 6722894 | 464 |
| 487 | ACS52546 | 303899 | 6722901 | 464 |
| 488 | ACS52547 | 303796 | 6722896 | 460 |
| 489 | ACS52548 | 303704 | 6722897 | 464 |
| 490 | ACS52549 | 303601 | 6722904 | 461 |
| 491 | ACS52550 | 303502 | 6722902 | 457 |
| 492 | ACS52557 | 305597 | 6722694 | 467 |
| 493 | ACS52558 | 305696 | 6722703 | 479 |
| 494 | ACS52559 | 305799 | 6722696 | 470 |
| 495 | ACS52560 | 305901 | 6722699 | 473 |
| 496 | ACS52561 | 305999 | 6722700 | 468 |
| 497 | ACS52562 | 306101 | 6722701 | 468 |
| 498 | ACS52563 | 306199 | 6722702 | 473 |
| 499 | ACS52566 | 304100 | 6722706 | 486 |
| 500 | ACS52567 | 304204 | 6722706 | 486 |
| 501 | ACS52568 | 304303 | 6722701 | 487 |
| 502 | ACS52569 | 304399 | 6722704 | 487 |
| 503 | ACS52570 | 304497 | 6722704 | 489 |
| 504 | ACS52571 | 304604 | 6722703 | 490 |
| 505 | ACS52572 | 304700 | 6722706 | 490 |
| 506 | ACS52573 | 304003 | 6722698 | 465 |
| 507 | ACS52574 | 303902 | 6722701 | 464 |
| 508 | ACS52575 | 303802 | 6722696 | 460 |
| 509 | ACS52576 | 303703 | 6722698 | 462 |
| 510 | ACS52577 | 303596 | 6722695 | 464 |
| 511 | ACS52578 | 303501 | 6722699 | 462 |
| 512 | ACS52579 | 303404 | 6722700 | 461 |
| 513 | ACS52580 | 303400 | 6722502 | 461 |
| 514 | ACS52581 | 304902 | 6722504 | 493 |
| 515 | ACS52582 | 304702 | 6722704 | 463 |
| 516 | ACS52583 | 305104 | 6722502 | 494 |
| 517 | ACS52584 | 305002 | 6722507 | 493 |
| 518 | ACS52585 | 304997 | 6722305 | 491 |
| 519 | ACS52586 | 305102 | 6722296 | 497 |
| 520 | ACS52587 | 305204 | 6722310 | 492 |
| 521 | ACS52588 | 305309 | 6722301 | 493 |
| 522 | ACS52589 | 305410 | 6722313 | 492 |
| 523 | ACS52590 | 305504 | 6722303 | 492 |
| 524 | ACS52591 | 305598 | 6722298 | 471 |
| 525 | ACS52592 | 303398 | 6722301 | 487 |

| | | | | |
|------|----------|--------|---------|-----|
| 1132 | ACS53203 | 300402 | 6724694 | 488 |
| 1133 | ACS53204 | 300300 | 6724692 | 483 |
| 1134 | ACS53205 | 300202 | 6724700 | 484 |
| 1135 | ACS53206 | 300099 | 6724296 | 492 |
| 1136 | ACS53207 | 300005 | 6724297 | 495 |
| 1137 | ACS53208 | 300102 | 6724698 | 482 |
| 1138 | ACS53209 | 300000 | 6724693 | 481 |
| 1139 | ACS53210 | 299905 | 6724699 | 481 |
| 1140 | ACS53211 | 299899 | 6724300 | 502 |
| 1141 | ACS53212 | 300203 | 6724305 | 494 |
| 1142 | ACS53213 | 302520 | 6724695 | 450 |
| 1143 | ACS53214 | 302590 | 6724691 | 452 |
| 1144 | ACS53215 | 302688 | 6724693 | 453 |
| 1145 | ACS53216 | 302798 | 6724684 | 454 |
| 1146 | ACS53217 | 302886 | 6724703 | 455 |
| 1147 | ACS53218 | 302996 | 6724711 | 453 |
| 1148 | ACS53219 | 301421 | 6724342 | 454 |
| 1149 | ACS53220 | 301502 | 6724315 | 452 |
| 1150 | ACS53221 | 301598 | 6724309 | 453 |
| 1151 | ACS53222 | 301685 | 6724296 | 455 |
| 1152 | ACS53223 | 300302 | 6724299 | 499 |
| 1153 | ACS53224 | 300401 | 6724302 | 497 |
| 1154 | ACS53225 | 300500 | 6724304 | 481 |
| 1155 | ACS53226 | 300602 | 6724303 | 481 |
| 1156 | ACS53227 | 300704 | 6724301 | 478 |
| 1157 | ACS53228 | 300799 | 6724299 | 472 |
| 1158 | ACS53229 | 300500 | 6723899 | 484 |
| 1159 | ACS53230 | 300393 | 6723905 | 485 |
| 1160 | ACS53231 | 300598 | 6723904 | 485 |
| 1161 | ACS53232 | 300701 | 6723906 | 489 |
| 1162 | ACS53233 | 301781 | 6724321 | 455 |
| 1163 | ACS53234 | 301905 | 6724283 | 452 |
| 1164 | ACS53235 | 301998 | 6724294 | 458 |
| 1165 | ACS53237 | 302208 | 6724325 | 456 |
| 1166 | ACS53238 | 302295 | 6724298 | 457 |
| 1167 | ACS53239 | 302397 | 6724303 | 457 |
| 1168 | ACS53240 | 302899 | 6724308 | 462 |
| 1169 | ACS53241 | 302989 | 6724273 | 463 |
| 1170 | ACS53242 | 303018 | 6723914 | 463 |
| 1171 | ACS53243 | 302801 | 6723884 | 463 |
| 1172 | ACS53244 | 302907 | 6723913 | 465 |
| 1173 | ACS53245 | 301583 | 6723876 | 456 |
| 1174 | ACS53246 | 301291 | 6723900 | 473 |
| 1175 | ACS53249 | 301301 | 6723092 | 452 |
| 1176 | ACS53250 | 301505 | 6723094 | 457 |
| 1177 | ACS53251 | 301215 | 6723103 | 454 |
| 1178 | ACS53252 | 302500 | 6724308 | 459 |
| 1179 | ACS53253 | 302579 | 6724300 | 455 |
| 1180 | ACS53254 | 302703 | 6724309 | 460 |
| 1181 | ACS53255 | 302789 | 6724293 | 460 |

| | | | | |
|-----|----------|--------|---------|-----|
| 526 | ACS52593 | 305200 | 6722499 | 472 |
| 527 | ACS52594 | 305302 | 6722502 | 473 |
| 528 | ACS52595 | 306202 | 6722296 | 477 |
| 529 | ACS52596 | 306103 | 6722303 | 476 |
| 530 | ACS52597 | 306001 | 6722302 | 477 |
| 531 | ACS52598 | 305898 | 6722300 | 475 |
| 532 | ACS52599 | 305805 | 6722301 | 472 |
| 533 | ACS52600 | 305702 | 6722304 | 473 |
| 534 | ACS52601 | 303510 | 6722304 | 490 |
| 535 | ACS52602 | 303600 | 6722296 | 489 |
| 536 | ACS52603 | 303702 | 6722295 | 489 |
| 537 | ACS52604 | 303807 | 6722301 | 490 |
| 538 | ACS52605 | 303906 | 6722297 | 492 |
| 539 | ACS52606 | 303998 | 6722304 | 491 |
| 540 | ACS52607 | 304096 | 6722298 | 490 |
| 541 | ACS52608 | 304196 | 6722300 | 493 |
| 542 | ACS52609 | 304298 | 6722300 | 490 |
| 543 | ACS52610 | 304406 | 6722300 | 487 |
| 544 | ACS52611 | 304506 | 6722298 | 491 |
| 545 | ACS52612 | 304806 | 6721503 | 495 |
| 546 | ACS52613 | 304898 | 6721502 | 495 |
| 547 | ACS52614 | 304997 | 6721498 | 495 |
| 548 | ACS52615 | 305101 | 6721507 | 495 |
| 549 | ACS52616 | 303602 | 6721900 | 464 |
| 550 | ACS52617 | 303499 | 6721900 | 465 |
| 551 | ACS52618 | 303404 | 6721897 | 467 |
| 552 | ACS52619 | 303693 | 6721900 | 468 |
| 553 | ACS52620 | 303800 | 6721903 | 468 |
| 554 | ACS52621 | 303898 | 6721904 | 469 |
| 555 | ACS52622 | 304000 | 6721898 | 468 |
| 556 | ACS52623 | 304100 | 6721897 | 468 |
| 557 | ACS52624 | 304895 | 6722301 | 471 |
| 558 | ACS52625 | 304800 | 6722300 | 470 |
| 559 | ACS52626 | 304701 | 6722304 | 473 |
| 560 | ACS52627 | 304601 | 6722302 | 469 |
| 561 | ACS52628 | 305194 | 6721509 | 496 |
| 562 | ACS52629 | 305297 | 6721503 | 497 |
| 563 | ACS52630 | 305393 | 6721499 | 497 |
| 564 | ACS52631 | 305491 | 6721511 | 498 |
| 565 | ACS52632 | 305605 | 6721507 | 498 |
| 566 | ACS52633 | 305701 | 6721501 | 499 |
| 567 | ACS52634 | 305807 | 6721501 | 500 |
| 568 | ACS52635 | 305891 | 6721502 | 501 |
| 569 | ACS52636 | 305993 | 6721505 | 501 |
| 570 | ACS52637 | 306099 | 6721504 | 502 |
| 571 | ACS52638 | 306199 | 6721905 | 501 |
| 572 | ACS52639 | 304802 | 6721097 | 472 |
| 573 | ACS52640 | 304900 | 6721093 | 474 |
| 574 | ACS52641 | 304997 | 6721100 | 476 |
| 575 | ACS52642 | 305104 | 6721100 | 475 |

| | | | | |
|------|----------|--------|---------|-----|
| 1182 | ACS53256 | 300804 | 6723899 | 486 |
| 1183 | ACS53257 | 300898 | 6723901 | 484 |
| 1184 | ACS53258 | 301102 | 6723900 | 475 |
| 1185 | ACS53259 | 300992 | 6723897 | 483 |
| 1186 | ACS53260 | 301201 | 6723904 | 471 |
| 1187 | ACS53261 | 300001 | 6723502 | 496 |
| 1188 | ACS53262 | 300096 | 6723503 | 494 |
| 1189 | ACS53263 | 300202 | 6723501 | 488 |
| 1190 | ACS53264 | 300298 | 6723506 | 486 |
| 1191 | ACS53265 | 300396 | 6723503 | 485 |
| 1192 | ACS53266 | 300498 | 6723505 | 480 |
| 1193 | ACS53267 | 300604 | 6723503 | 480 |
| 1194 | ACS53268 | 300700 | 6723502 | 479 |
| 1195 | ACS53269 | 300801 | 6723501 | 479 |
| 1196 | ACS53270 | 300907 | 6723495 | 489 |
| 1197 | ACS53271 | 300997 | 6723502 | 484 |
| 1198 | ACS53273 | 301101 | 6723092 | 453 |
| 1199 | ACS53274 | 301000 | 6723086 | 455 |
| 1200 | ACS53275 | 298680 | 6723518 | 458 |
| 1201 | ACS53276 | 298611 | 6723498 | 457 |
| 1202 | ACS53277 | 298405 | 6723501 | 457 |
| 1203 | ACS53278 | 298303 | 6723506 | 454 |
| 1204 | ACS53279 | 298281 | 6723110 | 455 |
| 1205 | ACS53280 | 298377 | 6723070 | 451 |
| 1206 | ACS53281 | 298504 | 6723106 | 455 |
| 1207 | ACS53282 | 298586 | 6723089 | 453 |
| 1208 | ACS53283 | 298709 | 6723080 | 453 |
| 1209 | ACS53284 | 298795 | 6723112 | 453 |
| 1210 | ACS53285 | 298911 | 6723083 | 455 |
| 1211 | ACS53286 | 299011 | 6723104 | 455 |
| 1212 | ACS53287 | 299306 | 6722685 | 455 |
| 1213 | ACS53288 | 299209 | 6722702 | 454 |
| 1214 | ACS53289 | 299118 | 6722698 | 454 |
| 1215 | ACS53290 | 299020 | 6722693 | 453 |
| 1216 | ACS53291 | 298879 | 6722697 | 451 |
| 1217 | ACS53292 | 298815 | 6722712 | 455 |
| 1218 | ACS53293 | 298692 | 6722688 | 454 |
| 1219 | ACS53294 | 298509 | 6722689 | 454 |
| 1220 | ACS53295 | 298403 | 6722690 | 456 |
| 1221 | ACS53296 | 298292 | 6722705 | 458 |
| 1222 | ACS53297 | 298601 | 6722699 | 452 |
| 1223 | ACS53298 | 302315 | 6723910 | 460 |
| 1224 | ACS53299 | 302379 | 6723905 | 460 |
| 1225 | ACS53301 | 301096 | 6723504 | 472 |
| 1226 | ACS53302 | 301196 | 6723494 | 471 |
| 1227 | ACS53303 | 301302 | 6723504 | 472 |
| 1228 | ACS53304 | 299803 | 6723101 | 476 |
| 1229 | ACS53305 | 299900 | 6723100 | 477 |
| 1230 | ACS53306 | 300002 | 6723100 | 478 |
| 1231 | ACS53307 | 300098 | 6723102 | 484 |

| | | | | |
|-----|----------|--------|---------|-----|
| 576 | ACS52643 | 305197 | 6721096 | 478 |
| 577 | ACS52644 | 305296 | 6721098 | 475 |
| 578 | ACS52645 | 305389 | 6721104 | 477 |
| 579 | ACS52646 | 305496 | 6721094 | 480 |
| 580 | ACS52647 | 305598 | 6721095 | 475 |
| 581 | ACS52648 | 305708 | 6721102 | 479 |
| 582 | ACS52649 | 305800 | 6721095 | 474 |
| 583 | ACS52650 | 305897 | 6721102 | 479 |
| 584 | ACS52651 | 305991 | 6721104 | 482 |
| 585 | ACS52652 | 306098 | 6721101 | 480 |
| 586 | ACS52653 | 306199 | 6721102 | 483 |
| 587 | ACS52654 | 306195 | 6721496 | 484 |
| 588 | ACS52655 | 306101 | 6721895 | 500 |
| 589 | ACS52656 | 306004 | 6721903 | 500 |
| 590 | ACS52657 | 305900 | 6721901 | 497 |
| 591 | ACS52658 | 305804 | 6721902 | 499 |
| 592 | ACS52659 | 305802 | 6721902 | 496 |
| 593 | ACS52660 | 305101 | 6721897 | 495 |
| 594 | ACS52661 | 304906 | 6721900 | 493 |
| 595 | ACS52662 | 304804 | 6721897 | 493 |
| 596 | ACS52663 | 304700 | 6721904 | 477 |
| 597 | ACS52664 | 305903 | 6718303 | 516 |
| 598 | ACS52665 | 305999 | 6718298 | 516 |
| 599 | ACS52666 | 305700 | 6721901 | 475 |
| 600 | ACS52667 | 305600 | 6721902 | 473 |
| 601 | ACS52668 | 305500 | 6721893 | 477 |
| 602 | ACS52669 | 305403 | 6721905 | 476 |
| 603 | ACS52670 | 305300 | 6721895 | 474 |
| 604 | ACS52671 | 306092 | 6718304 | 495 |
| 605 | ACS52672 | 304999 | 6721894 | 494 |
| 606 | ACS52673 | 304606 | 6721903 | 473 |
| 607 | ACS52674 | 304497 | 6721897 | 474 |
| 608 | ACS52675 | 304396 | 6721902 | 475 |
| 609 | ACS52676 | 304301 | 6721901 | 475 |
| 610 | ACS52677 | 304198 | 6721897 | 474 |
| 611 | ACS52678 | 306205 | 6718300 | 493 |
| 612 | ACS52679 | 302102 | 6722700 | 479 |
| 613 | ACS52680 | 302204 | 6722704 | 486 |
| 614 | ACS52681 | 302302 | 6722698 | 482 |
| 615 | ACS52682 | 302401 | 6722708 | 483 |
| 616 | ACS52683 | 302495 | 6722701 | 482 |
| 617 | ACS52684 | 302599 | 6722700 | 482 |
| 618 | ACS52685 | 302708 | 6722698 | 482 |
| 619 | ACS52686 | 302810 | 6722701 | 479 |
| 620 | ACS52687 | 302903 | 6722701 | 482 |
| 621 | ACS52688 | 303004 | 6722692 | 480 |
| 622 | ACS52689 | 303100 | 6722699 | 482 |
| 623 | ACS52690 | 303200 | 6722692 | 483 |
| 624 | ACS52691 | 303294 | 6721901 | 467 |
| 625 | ACS52692 | 302208 | 6722298 | 459 |

| | | | | |
|------|----------|--------|---------|-----|
| 1232 | ACS53308 | 300199 | 6723105 | 492 |
| 1233 | ACS53309 | 300300 | 6723104 | 504 |
| 1234 | ACS53310 | 300400 | 6723101 | 501 |
| 1235 | ACS53311 | 300496 | 6723099 | 490 |
| 1236 | ACS53312 | 300592 | 6723102 | 484 |
| 1237 | ACS53313 | 300698 | 6723099 | 478 |
| 1238 | ACS53314 | 300794 | 6723103 | 476 |
| 1239 | ACS53315 | 299414 | 6722704 | 476 |
| 1240 | ACS53317 | 299601 | 6722696 | 475 |
| 1241 | ACS53318 | 299704 | 6722698 | 473 |
| 1242 | ACS53319 | 299795 | 6722696 | 474 |
| 1243 | ACS53320 | 299898 | 6722700 | 476 |
| 1244 | ACS53321 | 298789 | 6723501 | 462 |
| 1245 | ACS53322 | 299013 | 6723502 | 465 |
| 1246 | ACS53323 | 299103 | 6723113 | 457 |
| 1247 | ACS53324 | 299202 | 6723106 | 461 |
| 1248 | ACS53325 | 298894 | 6723512 | 464 |
| 1249 | ACS53326 | 301703 | 6723913 | 456 |
| 1250 | ACS53327 | 301807 | 6723898 | 457 |
| 1251 | ACS53328 | 301901 | 6723893 | 460 |
| 1252 | ACS53329 | 302022 | 6723903 | 459 |
| 1253 | ACS53330 | 302468 | 6723890 | 459 |
| 1254 | ACS53331 | 302189 | 6723929 | 460 |
| 1255 | ACS53332 | 302579 | 6723886 | 464 |
| 1256 | ACS53333 | 302674 | 6723881 | 461 |
| 1257 | ACS53334 | 300318 | 6723922 | 470 |
| 1258 | ACS53335 | 300224 | 6723904 | 480 |
| 1259 | ACS53337 | 300108 | 6723898 | 480 |
| 1260 | ACS53338 | 300016 | 6723906 | 480 |
| 1261 | ACS53339 | 300900 | 6723099 | 474 |
| 1262 | ACS53340 | 301707 | 6722667 | 457 |
| 1263 | ACS53341 | 300000 | 6722697 | 478 |
| 1264 | ACS53342 | 300099 | 6722699 | 478 |
| 1265 | ACS53343 | 300196 | 6722702 | 482 |
| 1266 | ACS53344 | 300298 | 6722706 | 485 |
| 1267 | ACS53345 | 300397 | 6722700 | 479 |
| 1268 | ACS53346 | 300489 | 6722700 | 476 |
| 1269 | ACS53347 | 301599 | 6722671 | 457 |
| 1270 | ACS53348 | 301521 | 6722700 | 457 |
| 1271 | ACS53349 | 301389 | 6722710 | 457 |
| 1272 | ACS53350 | 301303 | 6722692 | 457 |
| 1273 | ACS53351 | 301208 | 6722692 | 455 |
| 1274 | ACS53352 | 301123 | 6722695 | 455 |
| 1275 | ACS53353 | 301023 | 6722709 | 453 |
| 1276 | ACS53354 | 300916 | 6722712 | 454 |
| 1277 | ACS53355 | 300821 | 6722692 | 452 |
| 1278 | ACS53356 | 300716 | 6722700 | 454 |
| 1279 | ACS53357 | 300621 | 6722713 | 454 |
| 1280 | ACS53358 | 305199 | 6716319 | 482 |
| 1281 | ACS53359 | 305313 | 6716301 | 486 |

| | | | | |
|-----|----------|--------|---------|-----|
| 626 | ACS52693 | 302293 | 6722302 | 462 |
| 627 | ACS52694 | 302397 | 6722297 | 463 |
| 628 | ACS52695 | 302499 | 6722298 | 463 |
| 629 | ACS52696 | 302598 | 6722303 | 465 |
| 630 | ACS52697 | 302703 | 6722305 | 467 |
| 631 | ACS52698 | 302795 | 6722300 | 465 |
| 632 | ACS52699 | 302860 | 6722302 | 464 |
| 633 | ACS52700 | 302997 | 6722298 | 460 |
| 634 | ACS52701 | 303099 | 6722302 | 467 |
| 635 | ACS52702 | 303192 | 6722299 | 464 |
| 636 | ACS52703 | 303295 | 6722301 | 463 |
| 637 | ACS52704 | 303299 | 6722699 | 463 |
| 638 | ACS52705 | 303202 | 6721899 | 470 |
| 639 | ACS52706 | 302903 | 6721899 | 486 |
| 640 | ACS52707 | 303107 | 6721904 | 479 |
| 641 | ACS52708 | 303002 | 6721904 | 487 |
| 642 | ACS52709 | 303399 | 6721498 | 469 |
| 643 | ACS52710 | 303498 | 6721500 | 470 |
| 644 | ACS52711 | 303592 | 6721503 | 471 |
| 645 | ACS52712 | 303698 | 6721501 | 470 |
| 646 | ACS52713 | 303803 | 6721504 | 469 |
| 647 | ACS52714 | 303896 | 6721489 | 470 |
| 648 | ACS52715 | 304000 | 6721499 | 468 |
| 649 | ACS52716 | 304096 | 6721497 | 471 |
| 650 | ACS52717 | 304195 | 6721501 | 475 |
| 651 | ACS52718 | 304290 | 6721499 | 473 |
| 652 | ACS52719 | 304399 | 6721504 | 473 |
| 653 | ACS52720 | 304497 | 6721500 | 476 |
| 654 | ACS52721 | 304594 | 6721504 | 475 |
| 655 | ACS52722 | 304697 | 6721500 | 472 |
| 656 | ACS52723 | 302597 | 6721096 | 486 |

| | | | | |
|------|----------|--------|---------|-----|
| 1282 | ACS53360 | 300134 | 6723905 | 482 |
| 1283 | ACS53361 | 305074 | 6715147 | 481 |
| 1284 | ACS53362 | 305192 | 6715108 | 485 |
| 1285 | ACS53363 | 305327 | 6715100 | 487 |
| 1286 | ACS53364 | 305539 | 6715119 | 492 |
| 1287 | ACS53365 | 305407 | 6715085 | 489 |
| 1288 | ACS53366 | 305601 | 6715102 | 490 |
| 1289 | ACS53367 | 299896 | 6723503 | 489 |
| 1290 | ACS53368 | 299802 | 6723503 | 484 |
| 1291 | ACS53369 | 299709 | 6723502 | 482 |
| 1292 | ACS53370 | 299605 | 6723506 | 481 |
| 1293 | ACS53371 | 299408 | 6723513 | 483 |
| 1294 | ACS53372 | 299503 | 6723502 | 481 |
| 1295 | ACS53373 | 299309 | 6723505 | 490 |
| 1296 | ACS53374 | 299199 | 6723503 | 479 |
| 1297 | ACS53375 | 299106 | 6723502 | 487 |
| 1298 | ACS53376 | 299697 | 6723100 | 477 |
| 1299 | ACS53377 | 299611 | 6723105 | 478 |
| 1300 | ACS53378 | 299299 | 6723102 | 480 |
| 1301 | ACS53379 | 299405 | 6723092 | 481 |
| 1302 | ACS53380 | 299504 | 6723105 | 478 |
| 1303 | ACS53381 | 304901 | 6715935 | 482 |
| 1304 | ACS53383 | 304734 | 6715885 | 481 |
| 1305 | ACS53384 | 304598 | 6715901 | 480 |
| 1306 | ACS53385 | 304508 | 6715908 | 480 |
| 1307 | ACS53386 | 304415 | 6715900 | 482 |
| 1308 | ACS53387 | 304317 | 6715929 | 479 |
| 1309 | ACS53388 | 305800 | 6715104 | 508 |
| 1310 | ACS53389 | 305705 | 6715097 | 509 |
| 1311 | ACS53392 | 305892 | 6715102 | 508 |
| | | | | |

APPENDIX 3: JORC CODE, 2012 EDITION – TABLE 1

SECTION 1 SAMPLING TECHNIQUES AND DATA

Rock chip and soil sampling program

Spectral survey

(Criteria in this section apply to all succeeding sections)

| Criteria | JORC Code explanation | Commentary |
|----------------------------|---|---|
| Sampling techniques | <ul style="list-style-type: none"> <i>Nature and quality of sampling (eg cut channels, random chips, or specific specialised industry standard measurement tools appropriate to the minerals under investigation, such as down hole gamma sondes, or handheld XRF instruments, etc). These examples should not be taken as limiting the broad meaning of sampling.</i> <i>Include reference to measures taken to ensure sample representivity and the appropriate calibration of any measurement tools or systems used.</i> <i>Aspects of the determination of mineralisation that are Material to the Public Report.</i> <i>In cases where ‘industry standard’ work has been done this would be relatively simple (eg ‘reverse circulation drilling was used to obtain 1 m samples from which 3 kg was pulverised to produce a 30 g charge for fire assay’). In other cases more explanation may be required, such as where there is coarse gold that has inherent sampling problems. Unusual commodities or mineralisation types (eg submarine nodules) may warrant disclosure of detailed information.</i> | <ul style="list-style-type: none"> Soil and Rock Chip sampling: A total of 1,311 soil and 40 rock samples were collected by soil sampling contractors and Brightstar employees. With the exception of the 28 rock chip samples noted in Table 1 of this release (MLP01 – MLP28), all assays remain outstanding. The soil sampling program was designed to provide a first pass geochemical test of anomalies outlined from regional reconnaissance mapping, hyperspectral imagery and an interpretation of geological and geophysical datasets on tenements E29/981, M29/212, and P29/2346, P29/2511-2515, P29/2538-2539, P29/2578-2585, P29/2649-2651. The rock chip samples were collected at selected outcrops and noted in Table 3. The soil samples were collected typically on a 400m x 100m grid with some infill lines creating a 200m x 100m grid. All geochemical soil sampling completed by Brightstar’s contractors was located on GDA94 MGA Zone 51 using a GPS, with rock chip samples taken from outcrop or subcrop identified during field trips and sample coordinates taken in GDA94 MGA Zone 51. A hole was dug to below the surficial material until the underlying |

| Criteria | JORC Code explanation | Commentary |
|-----------------------------------|--|---|
| | | <p>laterite material was encountered (~25cm depths). Material from this layer was collected, the <2mm fraction sieved and captured in calico bags for storage and transportation. Photographs and preliminary geological notes were taken, hole backfilled and the sampler then moved onto the next sample location.</p> <ul style="list-style-type: none"> • Rock chip samples were collected in the field by taking a representative 1-5kg rock sample from outcrop or subcrop. The collected samples were placed in a labelled calico sample bag. • Brightstar will submit all rock chip and soil samples for analysis in the coming weeks. • The primary aim of the mapping program is to identify pegmatite intrusives and their immediate host lithologies. • Pegmatite intrusives are readily identifiable in hand specimen in the field. • The identification of pegmatite does not infer the presence or absence of lithium mineralisation nor of any potentially lithium bearing minerals which can be difficult to identify in hand specimen, particularly if fine grained. • The determination of the presence or absence of lithium and/or any associated pathfinder elements will ultimately be determined by detailed sampling and laboratory analysis. • <i>The results relate to a high resolution satellite imagery analysis carried out over the Menzies Project. Pleadies, Kompasat-3, and Sentinel-2 satellite imagery was used, along with ALOS World 3D topography at 2.5m resolution over the project area.</i> |
| <p>Drilling techniques</p> | <ul style="list-style-type: none"> • <i>Drill type (eg core, reverse circulation, open-hole hammer, rotary air blast, auger, Bangka, sonic, etc) and details (eg core diameter, triple or standard tube, depth of diamond tails, face-sampling bit or other type, whether core is oriented and if so, by what method, etc).</i> | <ul style="list-style-type: none"> • No drilling completed • No sampling work done. |

| Criteria | JORC Code explanation | Commentary |
|---|--|---|
| Drill sample recovery | <ul style="list-style-type: none"> • <i>Method of recording and assessing core and chip sample recoveries and results assessed.</i> • <i>Measures taken to maximise sample recovery and ensure representative nature of the samples.</i> • <i>Whether a relationship exists between sample recovery and grade and whether sample bias may have occurred due to preferential loss/gain of fine/coarse material.</i> | <ul style="list-style-type: none"> • No drilling completed • <i>No sampling work done.</i> |
| Logging | <ul style="list-style-type: none"> • <i>Whether core and chip samples have been geologically and geotechnically logged to a level of detail to support appropriate Mineral Resource estimation, mining studies and metallurgical studies.</i> • <i>Whether logging is qualitative or quantitative in nature. Core (or costean, channel, etc) photography.</i> • <i>The total length and percentage of the relevant intersections logged.</i> | <ul style="list-style-type: none"> • No drilling was completed. • Preliminary qualitative geological observations were made at each soil sample location. This includes the cover type (e.g. hardpan, alluvium, laterite etc), regolith type (e.g. outcrop, residual etc), colour and any other notes. • Rock chips were taken directly from observed pegmatites either from outcrop or subcrop. • <i>No sampling work done.</i> |
| Sub-sampling techniques and sample preparation | <ul style="list-style-type: none"> • <i>If core, whether cut or sawn and whether quarter, half or all core taken.</i> • <i>If non-core, whether riffled, tube sampled, rotary split, etc and whether sampled wet or dry.</i> • <i>For all sample types, the nature, quality and appropriateness of the sample preparation technique.</i> • <i>Quality control procedures adopted for all sub-sampling stages to maximise representivity of samples.</i> • <i>Measures taken to ensure that the sampling is representative of the in situ material collected, including for instance results for field duplicate/second-half sampling.</i> • <i>Whether sample sizes are appropriate to the grain size of the material being sampled.</i> | <ul style="list-style-type: none"> • No drilling completed. • Samples were collected as dry original material from the appropriate regolith layer in hand-dug, small pits using manual tools. • Soil material was sieved to <2mm fraction in the field before collection into calico sample bags. • Soil sample depth (nominally 25cm below surface) and location of soil sample were recorded at each site. • All samples were dry sieved (-2mm) and approximately 1.5-2.0 kg of minus 2mm material sampled in the field and bagged directly into pre-numbered calico bags at the site location from which they were collected. • No further subsampling was conducted in the field. • A 200g sample is considered appropriate for soil sampling |

| Criteria | JORC Code explanation | Commentary |
|---|---|--|
| | | <ul style="list-style-type: none"> Rock chip samples comprising 2-3kg of representative material was placed into numbered calico bags. The rock chip samples were collected from outcrop or sub crop identified within P29/2585. The sampling practices are considered suitable for the stage of exploration. Sample sizes were considered appropriate for the grain size of the sampled material. <p><i>No sampling work done.</i></p> |
| Quality of assay data and laboratory tests | <ul style="list-style-type: none"> <i>The nature, quality and appropriateness of the assaying and laboratory procedures used and whether the technique is considered partial or total.</i> <i>For geophysical tools, spectrometers, handheld XRF instruments, etc, the parameters used in determining the analysis including instrument make and model, reading times, calibrations factors applied and their derivation, etc.</i> <i>Nature of quality control procedures adopted (eg standards, blanks, duplicates, external laboratory checks) and whether acceptable levels of accuracy (ie lack of bias) and precision have been established.</i> | <ul style="list-style-type: none"> Rock chip samples were submitted to SGS Perth Laboratory, with industry-standard processes appropriate for lithium analysis. Two assaying processes were selected to provide appropriate geochemical information, including multi-element determination using a Sodium Peroxide Fusion, HCl Dissolution and Inductively Coupled Plasma Optical Emission Spectrometry, along with Sodium Peroxide Fusion HCl Dissolution and Inductively Coupled Plasma Mass Spectrometry on a variety of metals. No geophysical tools were used. QAQC protocols were completed at SGS Perth, including the utilisation of duplicates, blanks, standards and repeats. <i>No assay or laboratory work done.</i> |
| Verification of sampling and assaying | <ul style="list-style-type: none"> <i>The verification of significant intersections by either independent or alternative company personnel.</i> <i>The use of twinned holes.</i> <i>Documentation of primary data, data entry procedures, data verification, data storage (physical and electronic) protocols.</i> <i>Discuss any adjustment to assay data.</i> | <ul style="list-style-type: none"> Company personnel have reviewed available results which have been shared with external consultants for independent review. No twinned holes were completed. Primary data is stored in database format with sample coordinates, sample IDs, and other pertinent information stored. There was no adjustments to assay data. <i>No assay or laboratory work done.</i> |

| Criteria | JORC Code explanation | Commentary |
|--|--|--|
| Location of data points | <ul style="list-style-type: none"> • Accuracy and quality of surveys used to locate drill holes (collar and down-hole surveys), trenches, mine workings and other locations used in Mineral Resource estimation. • Specification of the grid system used. • Quality and adequacy of topographic control. | <ul style="list-style-type: none"> • Rock chip and soil sample locations are located by handheld GPS to an accuracy of +/-5m. • Locations are given in GDA94 MGA Zone 51. • Diagrams showing sample locations are provided in the report. • The topographic control is judged as adequate for geochemical samples. • No data point surveys conducted. |
| Data spacing and distribution | <ul style="list-style-type: none"> • Data spacing for reporting of Exploration Results. • Whether the data spacing and distribution is sufficient to establish the degree of geological and grade continuity appropriate for the Mineral Resource and Ore Reserve estimation procedure(s) and classifications applied. • Whether sample compositing has been applied. | <ul style="list-style-type: none"> • The rock chip samples were collected from selected pegmatitic outcrops on tenements listed in Table 3. • Follow up rock chip sampling may be considered to tighten and better resolve areas of anomalous gold, lithium and pathfinder mineralisation. • Further rock chips may be undertaken to provide better definition of some anomalies. • The soil samples were collected from pre-selected grid points on Brightstar tenements E29/981, M29/212, and P29/2346, P29/2511-2515, P29/2538-2539, P29/2578-2585, P29/2649-2651. • Given the style of early-stage exploration it is inappropriate to consider reporting Mineral Resources or Reserves at this time. • Not applicable for the reporting of geochemical sampling results • No sample compositing has been applied. • No data points reported for the satellite survey |
| Orientation of data in relation to geological structure | <ul style="list-style-type: none"> • Whether the orientation of sampling achieves unbiased sampling of possible structures and the extent to which this is known, considering the deposit type. • If the relationship between the drilling orientation and the orientation of key mineralised structures is considered to have introduced a sampling | <ul style="list-style-type: none"> • Not applicable, this is early-stage exploration geochemical sampling and the orientation of sampling to the mineralisation is not fully known. • The data is primarily an initial exploration reconnaissance sampling program and is useful for identifying broad geological |

| Criteria | JORC Code explanation | Commentary |
|--------------------------|--|--|
| | <i>bias, this should be assessed and reported if material.</i> | <p>trends.</p> <ul style="list-style-type: none"> • The orientation of the sample lines is East-West with sufficient coverage to identify broad-scale features such as regional structures and geological contacts. • The orientation of sampling is considered appropriate with respect to the structure and targets being tested and the reconnaissance nature of the sampling. • Not applicable for this type of sampling • <i>No sampling reported</i> |
| Sample security | <ul style="list-style-type: none"> • <i>The measures taken to ensure sample security.</i> | <ul style="list-style-type: none"> • Following collection in the field, several calico sample bags containing soil samples were then bagged into numbered plastic green bags for ease of transport and security. These have been transported to the Perth by the sampling contractor to the laboratory. • <i>No sample security required.</i> |
| Audits or reviews | <ul style="list-style-type: none"> • <i>The results of any audits or reviews of sampling techniques and data.</i> | <ul style="list-style-type: none"> • Sampling and assaying techniques are industry-standard. • No external audit has been completed • <i>No external audit has been completed.</i> |

SECTION 2 REPORTING OF EXPLORATION RESULTS

(Criteria listed in the preceding section also apply to this section)

| Criteria | JORC Code explanation | Commentary |
|--|--|--|
| Mineral tenement and land tenure status | <ul style="list-style-type: none"> • <i>Type, reference name/number, location and ownership including agreements or material issues with third parties such as joint ventures, partnerships, overriding royalties, native title interests, historical sites, wilderness or national park and environmental settings.</i> • <i>The security of the tenure held at the time of reporting along with any known impediments to obtaining a licence to operate in the area.</i> | <ul style="list-style-type: none"> • M29/212, and P29/2346, P29/2511-2515, P29/2538-2539, P29/2578-2585, P29/2649-2651. • Brightstar Resources Limited has a 100% interest in the tenements listed above, and in the case of E29/981, Brightstar has gold and lithium rights only. • The tenements are in good standing with no known impediments. • The tenements are located on Adelong Station. |
| Exploration done by other parties | <ul style="list-style-type: none"> • <i>Acknowledgment and appraisal of exploration by other parties.</i> | <ul style="list-style-type: none"> • Multiple owners of the lease prior to Brightstar Resources Ltd. including Ardea Resources Ltd, Intermin Resources Ltd, Julia Mines and other parties. Exploration has included rock and soil sampling, and limited RAB, AC, and RC drilling, along with small scale open pit mining of gold deposits at Lady Irene. |
| Geology | <ul style="list-style-type: none"> • <i>Deposit type, geological setting and style of mineralisation.</i> | <ul style="list-style-type: none"> • Multiple styles of mineralisation, including shear-hosted gold mineralisation and lithium mineralisation hosted within pegmatites. |
| Drill hole Information | <ul style="list-style-type: none"> • <i>A summary of all information material to the understanding of the exploration results including a tabulation of the following information for all Material drill holes:</i> <ul style="list-style-type: none"> ○ <i>easting and northing of the drill hole collar</i> ○ <i>elevation or RL (Reduced Level – elevation above sea level in metres) of the drill hole collar</i> ○ <i>dip and azimuth of the hole</i> ○ <i>down hole length and interception depth</i> ○ <i>hole length.</i> • <i>If the exclusion of this information is justified on the basis that the information is not Material and this exclusion does not detract from the understanding of the report, the Competent Person should clearly explain</i> | <ul style="list-style-type: none"> • Not applicable as no drilling completed. • For soil and rock chip samples, all sample details reported in Tables 1, 3 and 4 within this document includes this information, noting the shallow (0- ~25cm) nature of soil sampling and rock chipping. |

| Criteria | JORC Code explanation | Commentary |
|---|--|---|
| | <i>why this is the case.</i> | |
| Data aggregation methods | <ul style="list-style-type: none"> <i>In reporting Exploration Results, weighting averaging techniques, maximum and/or minimum grade truncations (eg cutting of high grades) and cut-off grades are usually Material and should be stated.</i> <i>Where aggregate intercepts incorporate short lengths of high grade results and longer lengths of low grade results, the procedure used for such aggregation should be stated and some typical examples of such aggregations should be shown in detail.</i> <i>The assumptions used for any reporting of metal equivalent values should be clearly stated.</i> | <ul style="list-style-type: none"> Not applicable, no top cuts have been applied. |
| Relationship between mineralisation widths and intercept lengths | <ul style="list-style-type: none"> <i>These relationships are particularly important in the reporting of Exploration Results.</i> <i>If the geometry of the mineralisation with respect to the drill hole angle is known, its nature should be reported.</i> <i>If it is not known and only the down hole lengths are reported, there should be a clear statement to this effect (eg 'down hole length, true width not known').</i> | <ul style="list-style-type: none"> Not applicable, this will be investigated upon receipt and analysis of all soil and rock chip assays. |
| Diagrams | <ul style="list-style-type: none"> <i>Appropriate maps and sections (with scales) and tabulations of intercepts should be included for any significant discovery being reported These should include, but not be limited to a plan view of drill hole collar locations and appropriate sectional views.</i> | <ul style="list-style-type: none"> Diagrams and Maps/Sections have been included where useful. |
| Balanced reporting | <ul style="list-style-type: none"> <i>Where comprehensive reporting of all Exploration Results is not practicable, representative reporting of both low and high grades and/or widths should be practiced to avoid misleading reporting of Exploration Results.</i> | <ul style="list-style-type: none"> All results from current program are represented in the maps within the announcement. |

| Criteria | JORC Code explanation | Commentary |
|---|--|---|
| Other substantive exploration data | <ul style="list-style-type: none"> <i>Other exploration data, if meaningful and material, should be reported including (but not limited to): geological observations; geophysical survey results; geochemical survey results; bulk samples – size and method of treatment; metallurgical test results; bulk density, groundwater, geotechnical and rock characteristics; potential deleterious or contaminating substances.</i> | <ul style="list-style-type: none"> No other exploration data that has been collected is considered to be meaningful or material to this announcement. |
| Further work | <ul style="list-style-type: none"> <i>The nature and scale of planned further work (eg tests for lateral extensions or depth extensions or large-scale step-out drilling).</i> <i>Diagrams clearly highlighting the areas of possible extensions, including the main geological interpretations and future drilling areas, provided this information is not commercially sensitive.</i> | <ul style="list-style-type: none"> Future drilling programs will be planned based on a combination of the current program results and other historical drilling. |